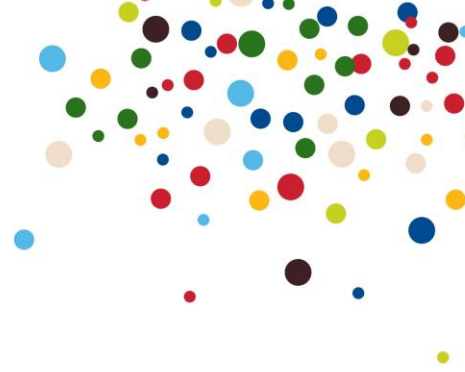


Barclaycard Talkmore 2 No Longer Available



Standard Call Charges

Time Periods

UK Geographic Calls (Bands K, L, A1, A2 & B)

| Barclaycard TalkMore 2 01/01/10 | | Monthly Rental | | Call Charges | |
|------------------------------------|-----------------------------|----------------|----------|--------------|----------|
| | | Ex VAT | Inc. VAT | Ex VAT | Inc. VAT |
| Daytime | Pence per minute | £4.247 | £5.10 | 2.127p | 2.55p |
| Evening | Up 75 minutes per call | | | FREE | |
| | Pence per minute thereafter | | | 0.766p | 0.919p |
| Weekend | Price at all times | | | FREE | |

Daytime calls are subject to a minimum charge of 3.404p exc. VAT (4.085p Inc. VAT).

Charges to Mobile Bands:

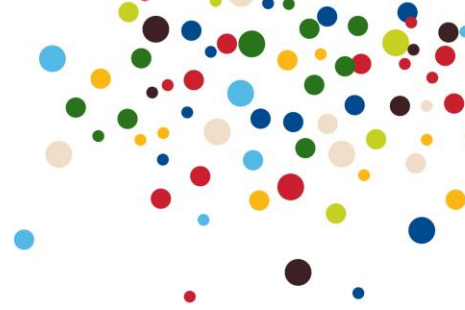
| Description | Daytime | | Evening | | Weekend | |
|------------------|---------|----------|---------|----------|---------|----------|
| | Ex VAT | Inc. VAT | Ex VAT | Inc. VAT | Ex VAT | Inc. VAT |
| FM1 O2 | 10.21 | 12.25 | 6.81 | 8.17 | 4.25 | 5.10 |
| FM2 Other | 10.21 | 12.25 | 6.81 | 8.17 | 4.25 | 5.10 |
| FM3 T-Mobile | 10.21 | 12.25 | 6.81 | 8.17 | 4.25 | 5.10 |
| FM4 Orange | 10.21 | 12.25 | 6.81 | 8.17 | 4.25 | 5.10 |
| FM5 Vodafone | 10.21 | 12.25 | 6.81 | 8.17 | 4.25 | 5.10 |
| FM6 Hutchison 3G | 16.17 | 19.40 | 12.34 | 14.81 | 4.25 | 5.10 |
| FM7 | 16.17 | 19.40 | 12.34 | 14.81 | 4.25 | 5.10 |

Charges to non-geographic numbers are the same as KC Talk charges and can be [found here](#).

Charges to International Destinations

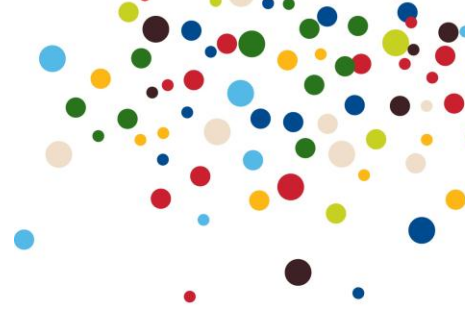
| | DAYTIME | | EVENING | | WEEKEND | |
|------------------|---------|----------|---------|----------|---------|----------|
| | Ex VAT | Inc. VAT | Ex VAT | Inc. VAT | Ex VAT | Inc. VAT |
| Afghanistan | 63.828 | 76.594 | 63.830 | 76.596 | 63.830 | 76.596 |
| Albania | 21.276 | 25.531 | 21.280 | 25.536 | 21.280 | 25.536 |
| Albania (Mobile) | 21.276 | 25.531 | 21.280 | 25.536 | 21.280 | 25.536 |
| Algeria | 21.276 | 25.531 | 21.280 | 25.536 | 21.280 | 25.536 |

Barclaycard Talkmore 2 No Longer Available



| | | | | | | |
|---------------------------|--------|--------|--------|--------|--------|--------|
| Algeria (Mobile) | 21.276 | 25.531 | 21.280 | 25.536 | 21.280 | 25.536 |
| Andorra | 12.768 | 15.322 | 12.770 | 15.324 | 12.770 | 15.324 |
| Andorra (Mobile) | 21.276 | 25.531 | 21.280 | 25.536 | 21.280 | 25.536 |
| Angola | 29.790 | 35.748 | 29.790 | 35.748 | 29.790 | 35.748 |
| Anguilla | 29.790 | 35.748 | 29.790 | 35.748 | 29.790 | 35.748 |
| Antigua & Barbuda | 17.022 | 20.426 | 17.020 | 20.424 | 17.020 | 20.424 |
| Antilles | 29.790 | 35.748 | 29.790 | 35.748 | 29.790 | 35.748 |
| ANTILLES N'LANDS (MOBILE) | 34.044 | 40.853 | 34.040 | 40.848 | 34.040 | 40.848 |
| Argentina | 4.254 | 5.105 | 4.250 | 5.100 | 4.250 | 5.100 |
| Argentina ISDN Band 6 | 21.276 | 25.531 | 0.000 | 0.000 | 0.000 | 0.000 |
| Armenia | 21.276 | 25.531 | 21.280 | 25.536 | 21.280 | 25.536 |
| Armenia (Mobile) | 34.044 | 40.853 | 34.040 | 40.848 | 34.040 | 40.848 |
| Aruba | 21.276 | 25.531 | 21.280 | 25.536 | 21.280 | 25.536 |
| Aruba (Mobile) | 40.002 | 48.002 | 40.000 | 48.000 | 40.000 | 48.000 |
| Ascension | 29.790 | 35.748 | 29.790 | 35.748 | 29.790 | 35.748 |
| Australia | 4.254 | 5.105 | 4.250 | 5.100 | 4.250 | 5.100 |
| Australia (Mobile) | 21.276 | 25.531 | 21.280 | 25.536 | 21.280 | 25.536 |
| Australia ISDN Band 4 | | 0.000 | 21.280 | 25.536 | 21.280 | 25.536 |
| Austria | 4.254 | 5.105 | 4.250 | 5.100 | 4.250 | 5.100 |
| Austria (Mobile) | 17.022 | 20.426 | 17.020 | 20.424 | 17.020 | 20.424 |
| Azerbaijan | 21.276 | 25.531 | 21.280 | 25.536 | 21.280 | 25.536 |
| Azores | 8.508 | 10.210 | 8.510 | 10.212 | 8.510 | 10.212 |
| Bahamas | 21.276 | 25.531 | 21.280 | 25.536 | 21.280 | 25.536 |
| Bahrain | 21.276 | 25.531 | 21.280 | 25.536 | 21.280 | 25.536 |
| Bangladesh | 17.022 | 20.426 | 17.020 | 20.424 | 17.020 | 20.424 |
| Bangladesh (Mobile) | 17.022 | 20.426 | 17.020 | 20.424 | 17.020 | 20.424 |
| Barbados | 17.022 | 20.426 | 17.020 | 20.424 | 17.020 | 20.424 |
| Barbados (Mobile) | 17.022 | 20.426 | 17.020 | 20.424 | 17.020 | 20.424 |
| Belarus | 29.790 | 35.748 | 29.790 | 35.748 | 29.790 | 35.748 |
| Belarus (Mobile) | 29.790 | 35.748 | 29.790 | 35.748 | 29.790 | 35.748 |
| Belgium | 4.254 | 5.105 | 4.250 | 5.100 | 4.250 | 5.100 |
| Belgium (Mobile) | 17.022 | 20.426 | 17.020 | 20.424 | 17.020 | 20.424 |
| Belize | 29.790 | 35.748 | 29.790 | 35.748 | 29.790 | 35.748 |
| Belize (Mobile) | 29.790 | 35.748 | 29.790 | 35.748 | 29.790 | 35.748 |
| Benin | 29.790 | 35.748 | 29.790 | 35.748 | 29.790 | 35.748 |
| Bermuda | 12.768 | 15.322 | 12.770 | 15.324 | 12.770 | 15.324 |
| Bermuda (Mobile) | 17.022 | 20.426 | 17.020 | 20.424 | 17.020 | 20.424 |

Barclaycard Talkmore 2 No Longer Available



| | | | | | | |
|------------------------------|---------|---------|---------|---------|---------|---------|
| Bhutan | 29.790 | 35.748 | 29.790 | 35.748 | 29.790 | 35.748 |
| Bolivia | 21.276 | 25.531 | 21.280 | 25.536 | 21.280 | 25.536 |
| Bolivia (Mobile) | 34.044 | 40.853 | 34.040 | 40.848 | 34.040 | 40.848 |
| Bosnia Herzegovina | 21.276 | 25.531 | 21.280 | 25.536 | 21.280 | 25.536 |
| Bosnia Herzegovina (Mobile) | 34.044 | 40.853 | 34.040 | 40.848 | 34.040 | 40.848 |
| Botswana | 12.768 | 15.322 | 12.770 | 15.324 | 12.770 | 15.324 |
| Brazil | 8.508 | 10.210 | 8.510 | 10.212 | 8.510 | 10.212 |
| Brazil (Mobile) | 21.276 | 25.531 | 21.280 | 25.536 | 21.280 | 25.536 |
| Brunei Darussalam | 21.276 | 25.531 | 21.280 | 25.536 | 21.280 | 25.536 |
| Bulgaria | 12.768 | 15.322 | 12.770 | 15.324 | 12.770 | 15.324 |
| Bulgaria (Mobile) | 29.790 | 35.748 | 29.790 | 35.748 | 29.790 | 35.748 |
| Burkina Faso | 29.790 | 35.748 | 29.790 | 35.748 | 29.790 | 35.748 |
| Burkina Faso (Mobile) | 29.790 | 35.748 | 29.790 | 35.748 | 29.790 | 35.748 |
| Burundi | 29.790 | 35.748 | 29.790 | 35.748 | 29.790 | 35.748 |
| Cambodia | 102.130 | 122.556 | 102.130 | 122.556 | 102.130 | 122.556 |
| Cameroon | 29.790 | 35.748 | 29.790 | 35.748 | 29.790 | 35.748 |
| Cameroon (Mobile) | 34.044 | 40.853 | 34.040 | 40.848 | 34.040 | 40.848 |
| Canada | 4.254 | 5.105 | 4.250 | 5.100 | 4.250 | 5.100 |
| Canary Islands | 4.254 | 5.105 | 4.250 | 5.100 | 4.250 | 5.100 |
| Cape Verde | 42.552 | 51.062 | 42.550 | 51.060 | 42.550 | 51.060 |
| Cape Verde (Mobile) | 42.552 | 51.062 | 42.550 | 51.060 | 42.550 | 51.060 |
| Cayman islands | 12.768 | 15.322 | 12.770 | 15.324 | 12.770 | 15.324 |
| CENT.AFRICAN REP. - (MOBILE) | 34.044 | 40.853 | 34.040 | 40.848 | 34.040 | 40.848 |
| Central African Republic | 21.276 | 25.531 | 21.280 | 25.536 | 21.280 | 25.536 |
| Chad | 68.088 | 81.706 | 68.090 | 81.708 | 68.090 | 81.708 |
| Chile | 4.254 | 5.105 | 4.250 | 5.100 | 4.250 | 5.100 |
| CHILE - (MOBILE) was IM110 | 29.790 | 35.748 | 29.790 | 35.748 | 29.790 | 35.748 |
| China | 8.508 | 10.210 | 8.510 | 10.212 | 8.510 | 10.212 |
| Christmas Island | 12.768 | 15.322 | 12.770 | 15.324 | 12.770 | 15.324 |
| Cocos Islands | 18.726 | 22.471 | 18.730 | 22.476 | 18.730 | 22.476 |
| Colombia | 8.508 | 10.210 | 8.510 | 10.212 | 8.510 | 10.212 |
| Comoros | 80.850 | 97.020 | 80.850 | 97.020 | 80.850 | 97.020 |
| Congo | 21.276 | 25.531 | 21.280 | 25.536 | 21.280 | 25.536 |
| Congo (Mobile) | 63.828 | 76.594 | 63.830 | 76.596 | 63.830 | 76.596 |
| Cook Island | 110.640 | 132.768 | 110.640 | 132.768 | 110.640 | 132.768 |
| Costa Rica | 12.768 | 15.322 | 12.770 | 15.324 | 12.770 | 15.324 |
| Costa Rica (Mobile) | 21.276 | 25.531 | 21.280 | 25.536 | 21.280 | 25.536 |

Barclaycard Talkmore 2 No Longer Available



| | | | | | | |
|------------------------------|---------|---------|---------|---------|---------|---------|
| Cote D'Ivoire | 29.790 | 35.748 | 29.790 | 35.748 | 29.790 | 35.748 |
| Croatia | 12.768 | 15.322 | 12.770 | 15.324 | 12.770 | 15.324 |
| Croatia (Mobile) | 34.044 | 40.853 | 34.040 | 40.848 | 34.040 | 40.848 |
| Cuba | 80.850 | 97.020 | 80.850 | 97.020 | 80.850 | 97.020 |
| Cyprus (Mobile) | 15.318 | 18.382 | 15.320 | 18.384 | 15.320 | 18.384 |
| Cyprus North | 8.508 | 10.210 | 8.510 | 10.212 | 8.510 | 10.212 |
| Cyprus South | 8.508 | 10.210 | 8.510 | 10.212 | 8.510 | 10.212 |
| Czech Republic | 8.508 | 10.210 | 8.510 | 10.212 | 8.510 | 10.212 |
| Czech Republic (Mobile) | 21.276 | 25.531 | 21.280 | 25.536 | 21.280 | 25.536 |
| Denmark | 4.254 | 5.105 | 4.250 | 5.100 | 4.250 | 5.100 |
| Denmark (Mobile) | 17.022 | 20.426 | 17.020 | 20.424 | 17.020 | 20.424 |
| Denmark ISDN Band 2 | 59.574 | 71.489 | 59.570 | 71.484 | 59.570 | 71.484 |
| Diego Garcia | 85.104 | 102.125 | 85.100 | 102.120 | 85.100 | 102.120 |
| Djibouti | 29.790 | 35.748 | 29.790 | 35.748 | 29.790 | 35.748 |
| Dominica | 21.276 | 25.531 | 21.280 | 25.536 | 21.280 | 25.536 |
| Dominica (Mobile) | 21.276 | 25.531 | 21.280 | 25.536 | 21.280 | 25.536 |
| Dominican Republic | 21.276 | 25.531 | 21.280 | 25.536 | 21.280 | 25.536 |
| East Timor (Mobile) | 8.508 | 10.210 | 8.510 | 10.212 | 8.510 | 10.212 |
| Ecuador | 29.790 | 35.748 | 29.790 | 35.748 | 29.790 | 35.748 |
| Ecuador (Mobile) | 29.790 | 35.748 | 29.790 | 35.748 | 29.790 | 35.748 |
| Egypt | 29.790 | 35.748 | 29.790 | 35.748 | 29.790 | 35.748 |
| Egypt (Mobile) | 29.790 | 35.748 | 29.790 | 35.748 | 29.790 | 35.748 |
| Egypt ISDN Band 4 | 144.000 | 172.800 | 144.000 | 172.800 | 144.000 | 172.800 |
| El Salvador | 21.276 | 25.531 | 21.280 | 25.536 | 21.280 | 25.536 |
| El Salvador (Mobile) | 21.276 | 25.531 | 21.280 | 25.536 | 21.280 | 25.536 |
| ELLIPSO | 185.000 | 222.000 | 185.000 | 222.000 | 185.000 | 222.000 |
| EMSAT Mobile Satellite | 185.000 | 222.000 | 185.000 | 222.000 | 185.000 | 222.000 |
| Equatorial Guinea | 42.552 | 51.062 | 42.550 | 51.060 | 42.550 | 51.060 |
| Eritrea | 68.088 | 81.706 | 68.090 | 81.708 | 68.090 | 81.708 |
| Estonia | 8.508 | 10.210 | 8.510 | 10.212 | 8.510 | 10.212 |
| ESTONIA - (MOBILE) was IM119 | 42.552 | 51.062 | 42.550 | 51.060 | 42.550 | 51.060 |
| Ethiopia | 59.574 | 71.489 | 59.570 | 71.484 | 59.570 | 71.484 |
| Ethiopia (Mobile) | 59.574 | 71.489 | 59.570 | 71.484 | 59.570 | 71.484 |
| Falkland Islands | 62.130 | 74.556 | 62.130 | 74.556 | 62.130 | 74.556 |
| Faroe Islands | 21.276 | 25.531 | 21.280 | 25.536 | 21.280 | 25.536 |
| Fiji | 62.982 | 75.578 | 62.980 | 75.576 | 62.980 | 75.576 |
| Fiji (Mobile) | 62.982 | 75.578 | 62.980 | 75.576 | 62.980 | 75.576 |

Barclaycard Talkmore 2 No Longer Available



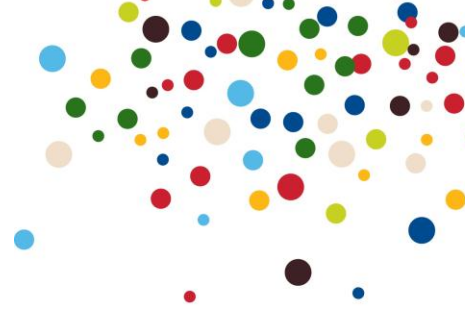
| | | | | | | |
|------------------------|---------|---------|---------|---------|---------|---------|
| Finland | 8.508 | 10.210 | 8.510 | 10.212 | 8.510 | 10.212 |
| Finland (Mobile) | 17.022 | 20.426 | 17.020 | 20.424 | 17.020 | 20.424 |
| France (Mobile) | 17.022 | 20.426 | 17.020 | 20.424 | 17.020 | 20.424 |
| France Inc Monaco | 4.254 | 5.105 | 4.250 | 5.100 | 4.250 | 5.100 |
| Freephone | 0.000 | 0.000 | 0.000 | 0.000 | 0.000 | 0.000 |
| French Guiana (Mobile) | 83.406 | 100.087 | 83.410 | 100.092 | 83.410 | 100.092 |
| French Polynesia | 42.552 | 51.062 | 42.550 | 51.060 | 42.550 | 51.060 |
| Gabon | 29.790 | 35.748 | 29.790 | 35.748 | 29.790 | 35.748 |
| Gabon (Mobile) | 34.044 | 40.853 | 34.040 | 40.848 | 34.040 | 40.848 |
| Gambia | 29.790 | 35.748 | 29.790 | 35.748 | 29.790 | 35.748 |
| Georgia | 12.768 | 15.322 | 12.770 | 15.324 | 12.770 | 15.324 |
| Georgia (Mobile) | 12.768 | 15.322 | 12.770 | 15.324 | 12.770 | 15.324 |
| Germany | 4.254 | 5.105 | 4.250 | 5.100 | 4.250 | 5.100 |
| Germany (Mobile) | 17.022 | 20.426 | 17.020 | 20.424 | 17.020 | 20.424 |
| Ghana | 21.276 | 25.531 | 21.280 | 25.536 | 21.280 | 25.536 |
| Ghana (Mobile) | 21.276 | 25.531 | 21.280 | 25.536 | 21.280 | 25.536 |
| Gibraltar | 12.768 | 15.322 | 12.770 | 15.324 | 12.770 | 15.324 |
| GIBRALTER - (MOBILE) | 13.620 | 16.344 | 13.620 | 16.344 | 13.620 | 16.344 |
| Greece | 8.508 | 10.210 | 8.510 | 10.212 | 8.510 | 10.212 |
| Greece (Mobile) | 34.044 | 40.853 | 34.040 | 40.848 | 34.040 | 40.848 |
| Greenland | 62.982 | 75.578 | 62.980 | 75.576 | 62.980 | 75.576 |
| Grenada | 17.022 | 20.426 | 17.020 | 20.424 | 17.020 | 20.424 |
| Guadeloupe | 21.276 | 25.531 | 21.280 | 25.536 | 21.280 | 25.536 |
| Guadeloupe (Mobile) | 34.044 | 40.853 | 34.040 | 40.848 | 34.040 | 40.848 |
| Guam | 12.768 | 15.322 | 12.770 | 15.324 | 12.770 | 15.324 |
| Guatemala | 29.790 | 35.748 | 29.790 | 35.748 | 29.790 | 35.748 |
| Guinea | 29.790 | 35.748 | 29.790 | 35.748 | 29.790 | 35.748 |
| Guinea (Mobile) | 21.276 | 25.531 | 21.280 | 25.536 | 21.280 | 25.536 |
| Guinea Bissau | 100.430 | 120.516 | 100.430 | 120.516 | 100.430 | 120.516 |
| Guyana | 42.552 | 51.062 | 42.550 | 51.060 | 42.550 | 51.060 |
| Guyana (Mobile) | 42.552 | 51.062 | 42.550 | 51.060 | 42.550 | 51.060 |
| Haiti | 51.066 | 61.279 | 51.070 | 61.284 | 51.070 | 61.284 |
| Haiti (Mobile) | 51.066 | 61.279 | 51.070 | 61.284 | 51.070 | 61.284 |
| Home | 2.130 | 2.556 | 0.000 | 0.000 | 0.000 | 0.000 |
| Honduras | 42.552 | 51.062 | 42.550 | 51.060 | 42.550 | 51.060 |
| Hong Kong | 4.254 | 5.105 | 4.250 | 5.100 | 4.250 | 5.100 |

Barclaycard Talkmore 2 No Longer Available



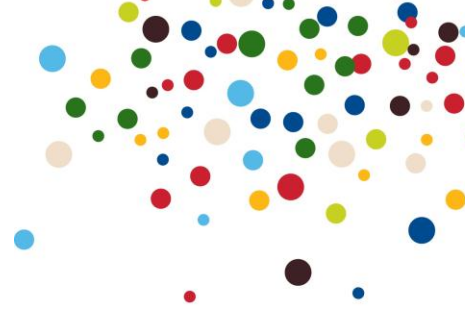
| | | | | | | |
|--------------------------------|---------|---------|---------|---------|---------|---------|
| Hong Kong (Mobile) | 4.254 | 5.105 | 4.250 | 5.100 | 4.250 | 5.100 |
| Hungary | 8.508 | 10.210 | 8.510 | 10.212 | 8.510 | 10.212 |
| Hungary (Mobile) | 17.022 | 20.426 | 17.020 | 20.424 | 17.020 | 20.424 |
| Iceland | 12.768 | 15.322 | 12.770 | 15.324 | 12.770 | 15.324 |
| ICELAND - (MOBILE) was IM131 | 28.938 | 34.726 | 28.940 | 34.728 | 28.940 | 34.728 |
| India | 29.790 | 35.748 | 29.790 | 35.748 | 29.790 | 35.748 |
| India (Mobile) | 29.790 | 35.748 | 29.790 | 35.748 | 29.790 | 35.748 |
| Indonesia | 12.768 | 15.322 | 12.770 | 15.324 | 12.770 | 15.324 |
| INDONESIA - (MOBILE) was IM132 | 29.790 | 35.748 | 29.790 | 35.748 | 29.790 | 35.748 |
| Information Services N | 12.600 | 15.120 | 12.600 | 15.120 | 12.600 | 15.120 |
| Inmarsat A | 504.000 | 604.800 | 504.000 | 604.800 | 504.000 | 604.800 |
| Inmarsat B | 323.000 | 387.600 | 323.000 | 387.600 | 323.000 | 387.600 |
| Inmarsat M & Mobiq | 556.000 | 667.200 | 556.000 | 667.200 | 556.000 | 667.200 |
| Iran | 12.768 | 15.322 | 12.770 | 15.324 | 12.770 | 15.324 |
| Iraq | 102.130 | 122.556 | 102.130 | 122.556 | 102.130 | 122.556 |
| Ireland Mobile | 17.022 | 20.426 | 17.020 | 20.424 | 17.020 | 20.424 |
| Ireland, Republic of | 4.254 | 5.105 | 4.250 | 5.100 | 4.250 | 5.100 |
| Iridium | 300.000 | 360.000 | 300.000 | 360.000 | 300.000 | 360.000 |
| Israel | 8.508 | 10.210 | 8.510 | 10.212 | 8.510 | 10.212 |
| Israel (Mobile) | 21.276 | 25.531 | 21.280 | 25.536 | 21.280 | 25.536 |
| Italy | 4.254 | 5.105 | 4.250 | 5.100 | 4.250 | 5.100 |
| Italy (Mobile) | 17.022 | 20.426 | 17.020 | 20.424 | 17.020 | 20.424 |
| Jamaica | 12.768 | 15.322 | 12.770 | 15.324 | 12.770 | 15.324 |
| Jamaica (Mobile) | 29.790 | 35.748 | 29.790 | 35.748 | 29.790 | 35.748 |
| Japan | 8.508 | 10.210 | 8.510 | 10.212 | 8.510 | 10.212 |
| Japan (Mobile) | 21.276 | 25.531 | 21.280 | 25.536 | 21.280 | 25.536 |
| Jordan | 21.276 | 25.531 | 21.280 | 25.536 | 21.280 | 25.536 |
| JORDAN - (MOBILE) was IM134 | 29.790 | 35.748 | 29.790 | 35.748 | 29.790 | 35.748 |
| Kazakhstan | 21.276 | 25.531 | 21.280 | 25.536 | 21.280 | 25.536 |
| Kenya | 51.066 | 61.279 | 51.070 | 61.284 | 51.070 | 61.284 |
| Kenya (Mobile) | 51.066 | 61.279 | 51.070 | 61.284 | 51.070 | 61.284 |
| Kiribati | 100.430 | 120.516 | 100.430 | 120.516 | 100.430 | 120.516 |
| Korea PD | 148.940 | 178.728 | 148.940 | 178.728 | 148.940 | 178.728 |
| Korea Republic South | 8.508 | 10.210 | 8.510 | 10.212 | 8.510 | 10.212 |
| Krygyzstan Mobile | 21.276 | 25.531 | 21.280 | 25.536 | 21.280 | 25.536 |
| Kuwait | 21.276 | 25.531 | 21.280 | 25.536 | 21.280 | 25.536 |
| Kuwait (Mobile) | 21.276 | 25.531 | 21.280 | 25.536 | 21.280 | 25.536 |

Barclaycard Talkmore 2 No Longer Available



| | | | | | | |
|------------------------|---------|---------|---------|---------|---------|---------|
| Kyrgystan | 21.276 | 25.531 | 21.280 | 25.536 | 21.280 | 25.536 |
| Laos | 93.618 | 112.342 | 93.620 | 112.344 | 93.620 | 112.344 |
| Laos (Mobile) | 93.618 | 112.342 | 93.620 | 112.344 | 93.620 | 112.344 |
| Latvia | 21.276 | 25.531 | 21.280 | 25.536 | 21.280 | 25.536 |
| Latvia (Mobile) | 29.790 | 35.748 | 29.790 | 35.748 | 29.790 | 35.748 |
| Lebanon | 21.276 | 25.531 | 21.280 | 25.536 | 21.280 | 25.536 |
| Lebanon (Mobile) | 29.790 | 35.748 | 29.790 | 35.748 | 29.790 | 35.748 |
| Leichtenstein (Mobile) | 17.022 | 20.426 | 17.020 | 20.424 | 17.020 | 20.424 |
| Lesotho | 12.768 | 15.322 | 12.770 | 15.324 | 12.770 | 15.324 |
| Liberia | 29.790 | 35.748 | 29.790 | 35.748 | 29.790 | 35.748 |
| Liberia (Mobile) | 29.790 | 35.748 | 29.790 | 35.748 | 29.790 | 35.748 |
| Libya | 21.276 | 25.531 | 21.280 | 25.536 | 21.280 | 25.536 |
| Liechtenstein | 8.508 | 10.210 | 8.510 | 10.212 | 8.510 | 10.212 |
| Lithuania | 12.768 | 15.322 | 12.770 | 15.324 | 12.770 | 15.324 |
| Lithuania (Mobile) | 21.276 | 25.531 | 21.280 | 25.536 | 21.280 | 25.536 |
| Luxembourg | 4.254 | 5.105 | 4.250 | 5.100 | 4.250 | 5.100 |
| Luxembourg (Mobile) | 17.022 | 20.426 | 17.020 | 20.424 | 17.020 | 20.424 |
| Macao | 29.790 | 35.748 | 29.790 | 35.748 | 29.790 | 35.748 |
| Macedonia | 29.790 | 35.748 | 29.790 | 35.748 | 29.790 | 35.748 |
| Macedonia (Mobile) | 29.790 | 35.748 | 29.790 | 35.748 | 29.790 | 35.748 |
| Madagascar | 29.790 | 35.748 | 29.790 | 35.748 | 29.790 | 35.748 |
| Madagascar (Mobile) | 29.790 | 35.748 | 29.790 | 35.748 | 29.790 | 35.748 |
| Madeira | 8.508 | 10.210 | 8.510 | 10.212 | 8.510 | 10.212 |
| Malawi | 21.276 | 25.531 | 21.280 | 25.536 | 21.280 | 25.536 |
| Malaysia | 8.508 | 10.210 | 8.510 | 10.212 | 8.510 | 10.212 |
| Malaysia (Mobile) | 12.768 | 15.322 | 12.770 | 15.324 | 12.770 | 15.324 |
| Maldives Islands | 29.790 | 35.748 | 29.790 | 35.748 | 29.790 | 35.748 |
| Mali | 42.552 | 51.062 | 42.550 | 51.060 | 42.550 | 51.060 |
| Malta | 21.276 | 25.531 | 21.280 | 25.536 | 21.280 | 25.536 |
| Malta (Mobile) | 34.044 | 40.853 | 34.040 | 40.848 | 34.040 | 40.848 |
| Mariana Islands | 8.508 | 10.210 | 8.510 | 10.212 | 8.510 | 10.212 |
| Marshall Islands | 100.430 | 120.516 | 100.430 | 120.516 | 100.430 | 120.516 |
| Martinique | 25.530 | 30.636 | 25.530 | 30.636 | 25.530 | 30.636 |
| Martinique (Mobile) | 25.530 | 30.636 | 25.530 | 30.636 | 25.530 | 30.636 |
| Mauratania Mobile | 34.044 | 40.853 | 34.040 | 40.848 | 34.040 | 40.848 |
| Mauritania | 29.790 | 35.748 | 29.790 | 35.748 | 29.790 | 35.748 |
| Mauritius | 29.790 | 35.748 | 29.790 | 35.748 | 29.790 | 35.748 |

Barclaycard Talkmore 2 No Longer Available



| | | | | | | |
|------------------------|---------|---------|---------|---------|---------|---------|
| Mexico | 12.768 | 15.322 | 12.770 | 15.324 | 12.770 | 15.324 |
| Mexico (Mobile) | 21.276 | 25.531 | 21.280 | 25.536 | 21.280 | 25.536 |
| Micronesia | 42.552 | 51.062 | 42.550 | 51.060 | 42.550 | 51.060 |
| Moldova | 21.276 | 25.531 | 21.280 | 25.536 | 21.280 | 25.536 |
| Moldova (Mobile) | 21.276 | 25.531 | 21.280 | 25.536 | 21.280 | 25.536 |
| Monaco | 4.254 | 5.105 | 4.250 | 5.100 | 4.250 | 5.100 |
| Monaco (Mobile) | 21.276 | 25.531 | 21.280 | 25.536 | 21.280 | 25.536 |
| Mongolia | 29.790 | 35.748 | 29.790 | 35.748 | 29.790 | 35.748 |
| Monserrat | 29.790 | 35.748 | 29.790 | 35.748 | 29.790 | 35.748 |
| Montenegro (Mobile) | 28.938 | 34.726 | 28.940 | 34.728 | 28.940 | 34.728 |
| Morocco | 29.790 | 35.748 | 29.790 | 35.748 | 29.790 | 35.748 |
| Mozambique | 29.790 | 35.748 | 29.790 | 35.748 | 29.790 | 35.748 |
| Mozambique (Mobile) | 34.044 | 40.853 | 34.040 | 40.848 | 34.040 | 40.848 |
| Myanmar (Burma) | 83.406 | 100.087 | 83.410 | 100.092 | 83.410 | 100.092 |
| Namibia | 21.276 | 25.531 | 21.280 | 25.536 | 21.280 | 25.536 |
| Nauru | 100.430 | 120.516 | 100.430 | 120.516 | 100.430 | 120.516 |
| Nepal | 50.214 | 60.257 | 50.210 | 60.252 | 50.210 | 60.252 |
| Netherland (Mobile) | 17.022 | 20.426 | 17.020 | 20.424 | 17.020 | 20.424 |
| Netherlands | 4.254 | 5.105 | 4.250 | 5.100 | 4.250 | 5.100 |
| New Caledonia | 85.104 | 102.125 | 85.100 | 102.120 | 85.100 | 102.120 |
| New Caledonia (Mobile) | 85.104 | 102.125 | 85.100 | 102.120 | 85.100 | 102.120 |
| New Zealand | 4.254 | 5.105 | 4.250 | 5.100 | 4.250 | 5.100 |
| New Zealand (Mobile) | 17.022 | 20.426 | 17.020 | 20.424 | 17.020 | 20.424 |
| Nicaragua | 59.574 | 71.489 | 59.570 | 71.484 | 59.570 | 71.484 |
| Niger | 25.530 | 30.636 | 25.530 | 30.636 | 25.530 | 30.636 |
| Niger (Mobile) | 25.530 | 30.636 | 25.530 | 30.636 | 25.530 | 30.636 |
| Nigeria | 29.790 | 35.748 | 29.790 | 35.748 | 29.790 | 35.748 |
| Nigeria (Mobile) | 29.790 | 35.748 | 29.790 | 35.748 | 29.790 | 35.748 |
| Niue | 100.430 | 120.516 | 100.430 | 120.516 | 100.430 | 120.516 |
| Norfolk Islands | 110.640 | 132.768 | 110.640 | 132.768 | 110.640 | 132.768 |
| North Mariana Island | 8.508 | 10.210 | 8.510 | 10.212 | 8.510 | 10.212 |
| Norway | 4.254 | 5.105 | 4.250 | 5.100 | 4.250 | 5.100 |
| Norway (Mobile) | 12.768 | 15.322 | 12.770 | 15.324 | 12.770 | 15.324 |
| Oman | 42.552 | 51.062 | 42.550 | 51.060 | 42.550 | 51.060 |
| Oman (Mobile) | 42.552 | 51.062 | 42.550 | 51.060 | 42.550 | 51.060 |
| Pakistan | 17.874 | 21.449 | 17.870 | 21.444 | 17.870 | 21.444 |
| Pakistan (Mobile) | 17.874 | 21.449 | 17.870 | 21.444 | 17.870 | 21.444 |

Barclaycard Talkmore 2 No Longer Available



| | | | | | | |
|------------------------------|---------|---------|---------|---------|---------|---------|
| Palau | 85.104 | 102.125 | 85.100 | 102.120 | 85.100 | 102.120 |
| Panama | 12.768 | 15.322 | 12.770 | 15.324 | 12.770 | 15.324 |
| Panama (Mobile) | 21.276 | 25.531 | 21.280 | 25.536 | 21.280 | 25.536 |
| Papua New Guinea | 62.982 | 75.578 | 62.980 | 75.576 | 62.980 | 75.576 |
| Paraguay | 29.790 | 35.748 | 29.790 | 35.748 | 29.790 | 35.748 |
| Peru | 8.508 | 10.210 | 8.510 | 10.212 | 8.510 | 10.212 |
| Peru (Mobile) | 34.044 | 40.853 | 34.040 | 40.848 | 34.040 | 40.848 |
| Philippines | 21.276 | 25.531 | 21.280 | 25.536 | 21.280 | 25.536 |
| Poland | 8.508 | 10.210 | 8.510 | 10.212 | 8.510 | 10.212 |
| Poland (Mobile) | 17.022 | 20.426 | 17.020 | 20.424 | 17.020 | 20.424 |
| Portugal | 8.508 | 10.210 | 8.510 | 10.212 | 8.510 | 10.212 |
| Portugal (Mobile) | 21.276 | 25.531 | 21.280 | 25.536 | 21.280 | 25.536 |
| Puerto Rico | 12.768 | 15.322 | 12.770 | 15.324 | 12.770 | 15.324 |
| Qatar | 29.790 | 35.748 | 29.790 | 35.748 | 29.790 | 35.748 |
| Reunion | 21.276 | 25.531 | 21.280 | 25.536 | 21.280 | 25.536 |
| Reunion (Mobile) | 34.044 | 40.853 | 34.040 | 40.848 | 34.040 | 40.848 |
| Romania | 12.768 | 15.322 | 12.770 | 15.324 | 12.770 | 15.324 |
| Romania (Mobile) | 34.044 | 40.853 | 34.040 | 40.848 | 34.040 | 40.848 |
| Russia | 4.254 | 5.105 | 4.250 | 5.100 | 4.250 | 5.100 |
| Russia (Mobile) | 12.768 | 15.322 | 12.770 | 15.324 | 12.770 | 15.324 |
| Rwanda | 21.276 | 25.531 | 21.280 | 25.536 | 21.280 | 25.536 |
| Rwanda (Mobile) | 29.790 | 35.748 | 29.790 | 35.748 | 29.790 | 35.748 |
| Samoa US | 21.276 | 25.531 | 21.280 | 25.536 | 21.280 | 25.536 |
| Samoa West | 85.104 | 102.125 | 85.100 | 102.120 | 85.100 | 102.120 |
| San Marino | 12.768 | 15.322 | 12.770 | 15.324 | 12.770 | 15.324 |
| Sao Tome & Principe | 100.430 | 120.516 | 100.430 | 120.516 | 100.430 | 120.516 |
| Sao Tome & Principe (Mobile) | 100.430 | 120.516 | 100.430 | 120.516 | 100.430 | 120.516 |
| Saudi Arabia | 29.790 | 35.748 | 29.790 | 35.748 | 29.790 | 35.748 |
| Saudi Arabia (Mobile) | 34.044 | 40.853 | 34.040 | 40.848 | 34.040 | 40.848 |
| Senegal | 29.790 | 35.748 | 29.790 | 35.748 | 29.790 | 35.748 |
| Serbia (Mobile) | 28.938 | 34.726 | 28.940 | 34.728 | 28.940 | 34.728 |
| Seychelles | 21.276 | 25.531 | 21.280 | 25.536 | 21.280 | 25.536 |
| Seychelles (Mobile) | 21.276 | 25.531 | 21.280 | 25.536 | 21.280 | 25.536 |
| Sierra Leone | 85.104 | 102.125 | 85.100 | 102.120 | 85.100 | 102.120 |
| Singapore | 4.254 | 5.105 | 4.250 | 5.100 | 4.250 | 5.100 |
| Singapore (Mobile) | 12.768 | 15.322 | 12.770 | 15.324 | 12.770 | 15.324 |
| Slovakia | 8.508 | 10.210 | 8.510 | 10.212 | 8.510 | 10.212 |

Barclaycard Talkmore 2 No Longer Available



| | | | | | | |
|-------------------------------|---------|---------|---------|---------|---------|---------|
| Slovakia (Mobile) | 17.022 | 20.426 | 17.020 | 20.424 | 17.020 | 20.424 |
| Slovenia | 12.768 | 15.322 | 12.770 | 15.324 | 12.770 | 15.324 |
| Slovenia (Mobile) | 28.938 | 34.726 | 28.940 | 34.728 | 28.940 | 34.728 |
| Solomon Islands | 100.430 | 120.516 | 100.430 | 120.516 | 100.430 | 120.516 |
| Somalia | 102.130 | 122.556 | 102.130 | 122.556 | 102.130 | 122.556 |
| South Africa | 12.768 | 15.322 | 12.770 | 15.324 | 12.770 | 15.324 |
| South Africa (Mobile) | 29.790 | 35.748 | 29.790 | 35.748 | 29.790 | 35.748 |
| Spain | 4.254 | 5.105 | 4.250 | 5.100 | 4.250 | 5.100 |
| Spain (Mobile) | 17.022 | 20.426 | 17.020 | 20.424 | 17.020 | 20.424 |
| Sri Lanka | 29.790 | 35.748 | 29.790 | 35.748 | 29.790 | 35.748 |
| Sri Lanka (Mobile) | 34.044 | 40.853 | 34.040 | 40.848 | 34.040 | 40.848 |
| St Helena | 100.430 | 120.516 | 100.430 | 120.516 | 100.430 | 120.516 |
| St Kitts & Nevis | 21.276 | 25.531 | 21.280 | 25.536 | 21.280 | 25.536 |
| St Lucia | 21.276 | 25.531 | 21.280 | 25.536 | 21.280 | 25.536 |
| St Lucia (Mobile) | 29.790 | 35.748 | 29.790 | 35.748 | 29.790 | 35.748 |
| St Pierre | 21.276 | 25.531 | 21.280 | 25.536 | 21.280 | 25.536 |
| St Pierre & Miquelon (Mobile) | 21.276 | 25.531 | 21.280 | 25.536 | 21.280 | 25.536 |
| St Vincent | 21.276 | 25.531 | 21.280 | 25.536 | 21.280 | 25.536 |
| Sudan | 29.790 | 35.748 | 29.790 | 35.748 | 29.790 | 35.748 |
| Surinam | 34.044 | 40.853 | 34.040 | 40.848 | 34.040 | 40.848 |
| Surinam (Mobile) | 34.044 | 40.853 | 34.040 | 40.848 | 34.040 | 40.848 |
| Swaziland | 21.276 | 25.531 | 21.280 | 25.536 | 21.280 | 25.536 |
| Sweden | 4.254 | 5.105 | 4.250 | 5.100 | 4.250 | 5.100 |
| Sweden (Mobile) | 21.276 | 25.531 | 21.280 | 25.536 | 21.280 | 25.536 |
| Switzerland | 6.810 | 8.172 | 6.810 | 8.172 | 6.810 | 8.172 |
| Switzerland (Mobile) | 21.276 | 25.531 | 21.280 | 25.536 | 21.280 | 25.536 |
| Syria | 68.088 | 81.706 | 68.090 | 81.708 | 68.090 | 81.708 |
| Taiwan | 8.508 | 10.210 | 8.510 | 10.212 | 8.510 | 10.212 |
| Tajikistan | 21.276 | 25.531 | 21.280 | 25.536 | 21.280 | 25.536 |
| Tajikistan (Mobile) | 29.790 | 35.748 | 29.790 | 35.748 | 29.790 | 35.748 |
| Tanzania | 42.552 | 51.062 | 42.550 | 51.060 | 42.550 | 51.060 |
| Tanzania (Mobile) | 42.552 | 51.062 | 42.550 | 51.060 | 42.550 | 51.060 |
| Thailand | 12.768 | 15.322 | 12.770 | 15.324 | 12.770 | 15.324 |
| THAILAND - (MOBILE) was IM171 | 29.790 | 35.748 | 29.790 | 35.748 | 29.790 | 35.748 |
| Thuraya Mobile | 300.000 | 360.000 | 300.000 | 360.000 | 300.000 | 360.000 |
| Togo | 29.790 | 35.748 | 29.790 | 35.748 | 29.790 | 35.748 |
| Togo (Mobile) | 29.790 | 35.748 | 29.790 | 35.748 | 29.790 | 35.748 |

Barclaycard Talkmore 2 No Longer Available



| | | | | | | |
|--------------------------------|---------|---------|---------|---------|---------|---------|
| Tokelau | 136.170 | 163.404 | 136.170 | 163.404 | 136.170 | 163.404 |
| Tonga | 100.430 | 120.516 | 100.430 | 120.516 | 100.430 | 120.516 |
| Tonga (Mobile) | 100.430 | 120.516 | 100.430 | 120.516 | 100.430 | 120.516 |
| Trinidad & Tobago | 21.276 | 25.531 | 21.280 | 25.536 | 21.280 | 25.536 |
| Trinidad & Tobago (Mobile) | 21.276 | 25.531 | 21.280 | 25.536 | 21.280 | 25.536 |
| Tunisia | 25.530 | 30.636 | 25.530 | 30.636 | 25.530 | 30.636 |
| Tunisia (Mobile) | 25.530 | 30.636 | 25.530 | 30.636 | 25.530 | 30.636 |
| Turkey | 17.022 | 20.426 | 17.020 | 20.424 | 17.020 | 20.424 |
| Turkey (Mobile) | 17.022 | 20.426 | 17.020 | 20.424 | 17.020 | 20.424 |
| Turkmenistan | 29.790 | 35.748 | 29.790 | 35.748 | 29.790 | 35.748 |
| Turks & Caicos Island | 21.276 | 25.531 | 21.280 | 25.536 | 21.280 | 25.536 |
| Turks & Caicos Island (Mobile) | 29.790 | 35.748 | 29.790 | 35.748 | 29.790 | 35.748 |
| Tuvalu | 127.660 | 153.192 | 127.660 | 153.192 | 127.660 | 153.192 |
| Tuvalu (Mobile) | 127.660 | 153.192 | 127.660 | 153.192 | 127.660 | 153.192 |
| UAE | 29.790 | 35.748 | 29.790 | 35.748 | 29.790 | 35.748 |
| UAE (Mobile) | 34.044 | 40.853 | 34.040 | 40.848 | 34.040 | 40.848 |
| Uganda | 21.276 | 25.531 | 21.280 | 25.536 | 21.280 | 25.536 |
| Ukraine | 21.276 | 25.531 | 21.280 | 25.536 | 21.280 | 25.536 |
| Uruguay | 42.552 | 51.062 | 42.550 | 51.060 | 42.550 | 51.060 |
| USA | 4.254 | 5.105 | 4.250 | 5.100 | 4.250 | 5.100 |
| Uzbekistan | 21.276 | 25.531 | 21.280 | 25.536 | 21.280 | 25.536 |
| Vanuatu | 100.430 | 120.516 | 100.430 | 120.516 | 100.430 | 120.516 |
| Vatican City | 6.810 | 8.172 | 6.810 | 8.172 | 6.810 | 8.172 |
| Vatican ISDN Band 2 | 64.260 | 77.112 | 64.260 | 77.112 | 64.260 | 77.112 |
| Venezuela | 21.276 | 25.531 | 21.280 | 25.536 | 21.280 | 25.536 |
| Venezuela (Mobile) | 34.044 | 40.853 | 34.040 | 40.848 | 34.040 | 40.848 |
| Vietnam | 85.104 | 102.125 | 85.100 | 102.120 | 85.100 | 102.120 |
| Vietnam (Mobile) | 76.596 | 91.915 | 76.600 | 91.920 | 76.600 | 91.920 |
| Virgin Islands British | 29.790 | 35.748 | 29.790 | 35.748 | 29.790 | 35.748 |
| Virgin Islands US | 12.768 | 15.322 | 12.770 | 15.324 | 12.770 | 15.324 |
| Yemen | 29.790 | 35.748 | 29.790 | 35.748 | 29.790 | 35.748 |
| Yemen (Mobile) | 29.790 | 35.748 | 29.790 | 35.748 | 29.790 | 35.748 |
| Yugoslavia | 29.790 | 35.748 | 29.790 | 35.748 | 29.790 | 35.748 |
| Yugoslavia (Mobile) | 34.044 | 40.853 | 34.040 | 40.848 | 34.040 | 40.848 |
| Zaire | 42.552 | 51.062 | 42.550 | 51.060 | 42.550 | 51.060 |
| Zambia | 21.276 | 25.531 | 21.280 | 25.536 | 21.280 | 25.536 |
| Zimbabwe | 12.768 | 15.322 | 12.770 | 15.324 | 12.770 | 15.324 |
| Zimbabwe (Mobile) | 21.276 | 25.531 | 21.280 | 25.536 | 21.280 | 25.536 |



Barclaycard Talkmore 2 No Longer Available



Time Periods

| | |
|---------------------|---|
| Daytime Rate | Monday ~ Friday, 8am ~ 6pm |
| Evening Rate | Monday ~ Friday, before 8am and after 6pm |
| Weekend Rate | All Day Saturday and Sunday |

All Calls are subject to a minimum charge of 3.523p Inc. VAT.

Barclaycard Non-Geographic Call Rates are available [here](#)