



Proud to be part
of local life

Barclaycard Non-Geo Call Rates

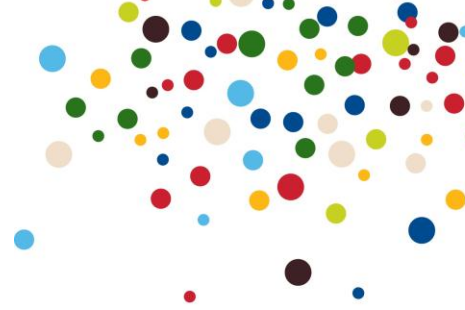
Fixed Fee Calls

Retail Band	BT Band Code	Fixed Fee At All Times	
		Ex VAT	Inc. VAT
FC00	ff15	5.100	6.120
FC01	ff0	8.600	10.320
FC02	ff16	12.700	15.240
FC03	ff8	15.800	18.960
FC04	ff17	17.000	20.400
FC05	ff1	21.000	25.200
FC06	ff3	21.280	25.536
FC07	ff10	21.700	26.040
FC08	ff6	25.600	30.720
FC09	ff18	29.700	35.640
FC10	ff19	34.000	40.800
FC11	ff9	36.200	43.440
FC12	ff20	38.200	45.840
FC13	ff2	42.000	50.400
FC14	ff11	51.100	61.320
FC15	ff12	63.900	76.680
FC16	ff14	76.600	91.920
FC17	ff13	85.200	102.240
FC18	ff21	127.700	153.240
FC19	ff24	68.100	81.720
FC20	ff25	102.200	122.640
FC21	ff26	106.400	127.680
FC22	ff27	110.700	132.840
FC23	ff28	8.500	10.200



Proud to be part
of local life

Barclaycard Non-Geo Call Rates



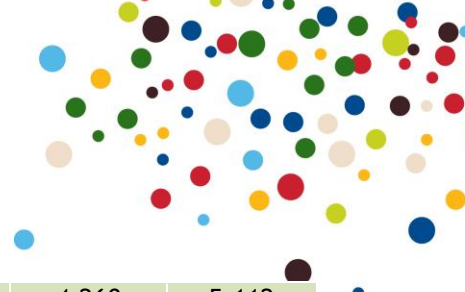
Other Non-Geographic Calls

KC Code	BT Code	Daytime		Evening		Weekend	
		Ex VAT	Inc. VAT	Ex VAT	Inc. VAT	Ex VAT	Inc. VAT
FW01	fw1	13.200	15.840	13.200	15.840	6.440	7.728
FW02	fw2	12.500	15.000	10.400	12.480	5.300	6.360
FW03	fw3	13.900	16.680	11.100	13.320	5.600	6.720
FW04	fw4	13.500	16.200	8.250	9.900	4.130	4.956
i1	i1	4.260	5.112	4.260	5.112	4.260	5.112
i10	i10	5.960	7.152	5.960	7.152	5.960	7.152
i11	i11	6.810	8.172	6.810	8.172	6.810	8.172
i12	i12	7.660	9.192	7.660	9.192	7.660	9.192
i13	i13	2.550	3.060	1.700	2.040	0.850	1.020
i14	i14	3.360	4.032	1.270	1.524	0.850	1.020
i15	i15	3.360	4.032	0.850	1.020	0.850	1.020
i16	i16	3.360	4.032	3.360	4.032	3.360	4.032
i17	i17	3.190	3.828	0.810	0.972	0.810	0.972
i18	i18	3.030	3.636	0.770	0.924	0.770	0.924
i19	i19	2.860	3.432	0.720	0.864	0.720	0.864
i2	i2	8.510	10.212	8.510	10.212	8.510	10.212
i20	i20	2.690	3.228	0.680	0.816	0.680	0.816
i21	i21	2.550	3.060	0.850	1.020	0.850	1.020
i22	i22	2.430	2.916	0.810	0.972	0.810	0.972
i23	i23	2.300	2.760	0.770	0.924	0.770	0.924
i24	i24	2.430	2.916	0.850	1.020	0.850	1.020
i25	i25	2.300	2.760	0.850	1.020	0.850	1.020
i26	i26	3.400	4.080	1.700	2.040	0.850	1.020
i27	i27	6.730	8.076	3.360	4.032	1.270	1.524
i3	i3	0.850	1.020	0.850	1.020	0.850	1.020
i4	i4	1.700	2.040	1.700	2.040	1.700	2.040
i5	i5	2.550	3.060	2.550	3.060	2.550	3.060
i8	i8	3.400	4.080	3.400	4.080	3.400	4.080
i9	i9	5.110	6.132	5.110	6.132	5.110	6.132
IP01	g21	4.160	4.992	1.700	2.040	1.000	1.200
LC	n/a	2.500	3.000	1.070	1.284	0.720	0.864
MF01	g3	3.360	4.032	1.260	1.512	0.850	1.020
MF02	mm2	3.360	4.032	1.260	1.512	0.850	1.020
MF03	mm3	3.360	4.032	1.260	1.512	0.850	1.020



Proud to be part
of local life

Barclaycard Non-Geo Call Rates



MF04	mm1	4.260	5.112	4.260	5.112	4.260	5.112
MF05	mm4	3.360	4.032	1.260	1.512	0.850	1.020
MF06	mm5	3.360	4.032	1.260	1.512	0.850	1.020
MF07	mm6	3.400	4.080	3.400	4.080	3.400	4.080
MF08	mm7	4.210	5.052	2.120	2.544	1.700	2.040
MM01	g8	0.850	1.020	0.850	1.020	0.850	1.020
MM02	g9	1.700	2.040	1.700	2.040	1.700	2.040
MM03	g10	2.550	3.060	2.550	3.060	2.550	3.060
MM04	g11	3.400	4.080	3.400	4.080	3.400	4.080
MM05	g6	4.260	5.112	4.260	5.112	4.260	5.112
MM06	g12	5.110	6.132	5.110	6.132	5.110	6.132
MM07	g13	5.960	7.152	5.960	7.152	5.960	7.152
MM08	g14	6.810	8.172	6.810	8.172	6.810	8.172
MM09	g15	7.660	9.192	7.660	9.192	7.660	9.192
MM10	g7	8.510	10.212	8.510	10.212	8.510	10.212
MM11	g16	1.700	2.040	0.850	1.020	0.850	1.020
MM12	g17	2.550	3.060	1.700	2.040	0.850	1.020
MM13	g18	3.360	4.032	0.850	1.020	0.850	1.020
MM14	g19	3.360	4.032	1.270	1.524	0.850	1.020
MM15	g20	4.210	5.052	2.110	2.532	1.700	2.040
MM16	g22	0.430	0.516	0.430	0.516	0.430	0.516
MM17	g23	6.730	8.076	3.360	4.032	1.270	1.524
NF	No Fee Calls	0.000	0.000	0.000	0.000	0.000	0.000
PN01	e	4.200	5.040	4.200	5.040	4.200	5.040
PN02	d	14.220	17.064	8.380	10.056	8.380	10.056
PN03	pn1	20.430	24.516	13.620	16.344	6.810	8.172
PN04	f	22.980	27.576	15.320	18.384	7.660	9.192
PN05	j	26.420	31.704	16.850	20.220	8.040	9.648
PN06	k	31.910	38.292	21.270	25.524	10.630	12.756
PN07	pn2	42.550	51.060	42.550	51.060	42.550	51.060
PN08	pn3	41.700	50.040	33.190	39.828	33.190	39.828
PN09	pn4	22.130	26.556	22.130	26.556	22.130	26.556
PN10	pn5	14.470	17.364	14.470	17.364	14.470	17.364
PN11	pn5	17.020	20.424	17.020	20.424	17.020	20.424
S18	local	3.360	4.032	1.260	1.512	0.850	1.020
PS04	m	34.930	41.916	24.100	28.920	24.100	28.920
S23	r	4.990	5.988	2.450	2.940	1.920	2.304
S24	national	6.730	8.076	3.360	4.032	1.700	2.040



Proud to be part
of local life

Barclaycard Non-Geo Call Rates



S10	c	10.700	12.840	6.200	7.440	3.270	3.924
N/A	g4	1.702	2.042	0.851	1.021	0.851	1.021
PR00	p27	4.255	5.106	4.255	5.106	4.255	5.106
PR01	p9	8.510	10.212	8.510	10.212	8.510	10.212
PR02	p12	12.765	15.318	12.765	15.318	12.765	15.318
PR03	p13	17.021	20.425	17.021	20.425	17.021	20.425
PR04	p6	21.276	25.531	21.276	25.531	21.276	25.531
PR05	p14	25.531	30.637	25.531	30.637	25.531	30.637
PR06	p10	29.787	35.744	29.787	35.744	29.787	35.744
PR07	p15	34.042	40.850	34.042	40.850	34.042	40.850
PR08	p16	38.287	45.944	38.287	45.944	38.287	45.944
PR09	p4	41.700	50.040	41.700	50.040	41.700	50.040
PR10	p5	42.553	51.064	42.553	51.064	42.553	51.064
PR11	p17	46.808	56.170	46.808	56.170	46.808	56.170
PR12	p7	51.063	61.276	51.063	61.276	51.063	61.276
PR13	p18	55.319	66.383	55.319	66.383	55.319	66.383
PR14	p19	59.574	71.489	59.574	71.489	59.574	71.489
PR15	p8	63.829	76.595	63.829	76.595	63.829	76.595
PR16	p20	68.085	81.702	68.085	81.702	68.085	81.702
PR17	p21	72.340	86.808	72.340	86.808	72.340	86.808
PR18	p22	76.595	91.914	76.595	91.914	76.595	91.914
PR19	p23	80.851	97.021	80.851	97.021	80.851	97.021
PR20	p3	85.106	102.127	85.106	102.127	85.106	102.127
PR21	p24	93.617	112.340	93.617	112.340	93.617	112.340
PR22	p25	102.127	122.552	102.127	122.552	102.127	122.552
PR23	p11	110.638	132.766	110.638	132.766	110.638	132.766
PR24	p26	119.148	142.978	119.148	142.978	119.148	142.978
PR25	p0	127.650	153.180	127.650	153.180	127.650	153.180
PR26	p31	11.064	13.277	11.064	13.277	11.064	13.277
PR27	p32	15.319	18.383	15.319	18.383	15.319	18.383
PR28	p33	106.383	127.660	106.383	127.660	106.383	127.660

Time Periods

Daytime Rate	Monday ~ Friday, 8am ~ 6pm
Evening Rate	Monday ~ Friday, before 8am and after 6pm
Weekend Rate	All Day Saturday and Sunday