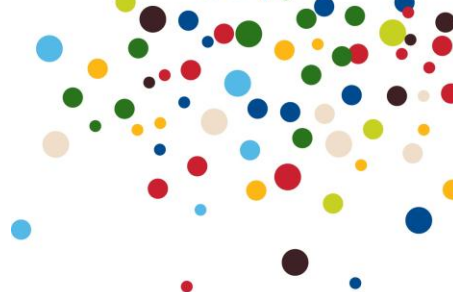


# Barclaycard Option 2 - No Longer Available



## Standard Call Charges

[For Time Periods, please see here:](#)

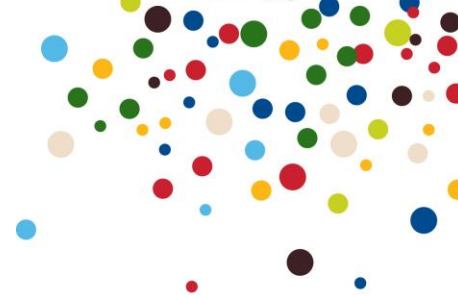
Description	DAYTIME		EVENING		WEEKEND	
	Ex VAT	Inc. VAT	Ex VAT	Inc. VAT	Ex VAT	Inc. VAT
Afghanistan	69.048	82.858	65.988	79.186	61.200	73.440
Albania	34.440	41.328	29.232	35.078	27.720	33.264
Albania (Mobile)	34.440	41.328	29.232	35.078	27.720	33.264
Algeria	34.440	41.328	29.232	35.078	27.720	33.264
Algeria (Mobile)	74.736	89.683	66.492	79.790	64.098	76.918
Andorra	34.440	41.328	29.232	35.078	27.720	33.264
Andorra (Mobile)	74.736	89.683	66.492	79.790	64.098	76.918
Angola	69.048	82.858	65.988	79.186	61.200	73.440
Anguilla	39.816	47.779	33.600	40.320	31.920	38.304
Anguilla (Mobile)	39.816	47.779	33.600	40.320	31.920	38.304
Antigua & Barbuda	39.816	47.779	33.600	40.320	31.920	38.304
Antilles	30.000	36.000	25.002	30.002	15.000	18.000
ANTILLES N'LANDS (MOBILE)	30.000	36.000	25.002	30.002	15.000	18.000
Argentina	66.990	80.388	56.448	67.738	50.520	60.624
Argentina (Mobile)	66.990	80.388	56.448	67.738	50.520	60.624
Armenia	30.000	36.000	25.002	30.002	15.000	18.000
Armenia (Mobile)	30.000	36.000	25.002	30.002	15.000	18.000
Aruba	30.000	36.000	25.002	30.002	15.000	18.000
Aruba (Mobile)	30.000	36.000	25.002	30.002	15.000	18.000
Ascension	69.048	82.858	65.988	79.186	61.200	73.440
Australia	18.000	21.600	12.000	14.400	7.998	9.598
Australia (Mobile)	59.820	71.784	54.096	64.915	51.822	62.186
Austria	12.000	14.400	10.002	12.002	7.998	9.598
Austria (Mobile)	51.366	61.639	48.210	57.852	46.368	55.642
Azerbaijan	30.000	36.000	25.002	30.002	15.000	18.000
Azores	12.000	14.400	10.002	12.002	7.998	9.598

# Barclaycard Option 2 - No Longer Available



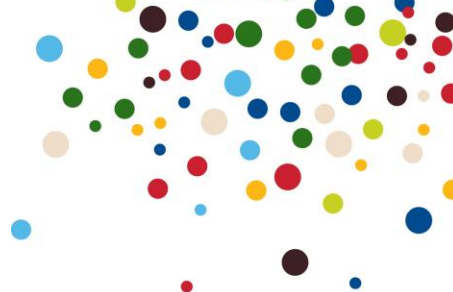
Bahamas	39.816	47.779	33.600	40.320	31.920	38.304
Bahrain	30.000	36.000	25.002	30.002	15.000	18.000
Bangladesh	30.000	36.000	25.002	30.002	19.998	23.998
Bangladesh (Mobile)	30.000	36.000	25.002	30.002	19.998	23.998
Barbados	39.816	47.779	33.600	40.320	31.920	38.304
Barbados (Mobile)	39.816	47.779	33.600	40.320	31.920	38.304
Belarus	30.000	36.000	25.002	30.002	15.000	18.000
Belarus (Mobile)	30.000	36.000	25.002	30.002	15.000	18.000
Belgium	12.000	14.400	10.002	12.002	7.998	9.598
Belgium (Mobile)	43.188	51.826	41.754	50.105	38.892	46.670
Belize	30.000	36.000	25.002	30.002	15.000	18.000
Belize (Mobile)	30.000	36.000	25.002	30.002	15.000	18.000
Benin	66.990	80.388	56.448	67.738	50.520	60.624
Bermuda	39.816	47.779	33.600	40.320	31.920	38.304
Bermuda (Mobile)	39.816	47.779	33.600	40.320	31.920	38.304
Bhutan	55.200	66.240	52.440	62.928	48.960	58.752
Bolivia	69.048	82.858	65.988	79.186	61.200	73.440
Bolivia (Mobile)	69.048	82.858	65.988	79.186	61.200	73.440
Bosnia Herzegovina	34.440	41.328	29.232	35.078	27.720	33.264
Bosnia Herzegovina (Mobile)	74.736	89.683	66.492	79.790	64.098	76.918
Botswana	66.990	80.388	56.448	67.738	50.520	60.624
Brazil	66.990	80.388	56.448	67.738	50.520	60.624
Brazil (Mobile)	66.990	80.388	56.448	67.738	50.520	60.624
Brunei Darussalam	55.200	66.240	52.440	62.928	48.960	58.752
Bulgaria	34.440	41.328	29.232	35.078	27.720	33.264
Bulgaria (Mobile)	34.440	41.328	29.232	35.078	27.720	33.264
Burkina Faso	69.048	82.858	65.988	79.186	61.200	73.440
Burkina Faso (Mobile)	69.048	82.858	65.988	79.186	61.200	73.440
Burundi	69.048	82.858	65.988	79.186	61.200	73.440

## Barclaycard Option 2 - No Longer Available



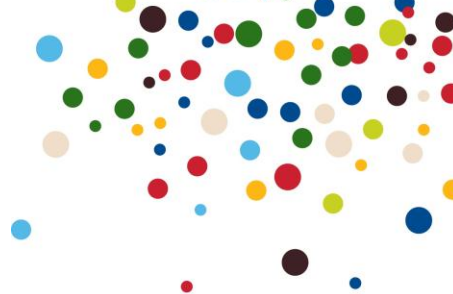
Cambodia	102.126	122.551	99.570	119.484	97.020	116.424
Cameroon	66.990	80.388	56.448	67.738	50.520	60.624
Cameroon (Mobile)	66.990	80.388	56.448	67.738	50.520	60.624
Canada	12.000	14.400	10.002	12.002	7.998	9.598
Canary Islands	12.000	14.400	10.002	12.002	7.998	9.598
Cape Verde	69.048	82.858	65.988	79.186	61.200	73.440
Cape Verde (Mobile)	69.048	82.858	65.988	79.186	61.200	73.440
Cayman islands	39.816	47.779	33.600	40.320	31.920	38.304
CENT.AFRICAN REP. - (MOBILE)	69.048	82.858	65.988	79.186	61.200	73.440
Central African Republic	69.048	82.858	65.988	79.186	61.200	73.440
Chad	89.358	107.230	86.808	104.170	84.252	101.102
Chad (Mobile)	89.358	107.230	86.808	104.170	84.252	101.102
Chile	66.990	80.388	56.448	67.738	50.520	60.624
CHILE - (MOBILE) was IM110	66.990	80.388	56.448	67.738	50.520	60.624
China	55.200	66.240	52.440	62.928	48.960	58.752
Christmas Island	18.000	21.600	12.000	14.400	7.998	9.598
Cocos Islands	18.000	21.600	12.000	14.400	7.998	9.598
Colombia	69.048	82.858	65.988	79.186	61.200	73.440
Colombia (Mobile)	69.048	82.858	65.988	79.186	61.200	73.440
Comoros	89.358	107.230	86.808	104.170	84.252	101.102
Congo	69.048	82.858	65.988	79.186	61.200	73.440
Congo (Mobile)	69.048	82.858	65.988	79.186	61.200	73.440
Cook Island	89.358	107.230	86.808	104.170	84.252	101.102
Costa Rica	66.990	80.388	56.448	67.738	50.520	60.624
Costa Rica (Mobile)	66.990	80.388	56.448	67.738	50.520	60.624
Cote D'Ivoire	66.990	80.388	56.448	67.738	50.520	60.624
Croatia	34.440	41.328	29.232	35.078	27.720	33.264
Croatia (Mobile)	74.736	89.683	66.492	79.790	64.098	76.918
Cuba	89.358	107.230	86.808	104.170	84.252	101.102
Cyprus (Mobile)	74.742	89.690	66.492	79.790	64.098	76.918

## Barclaycard Option 2 - No Longer Available



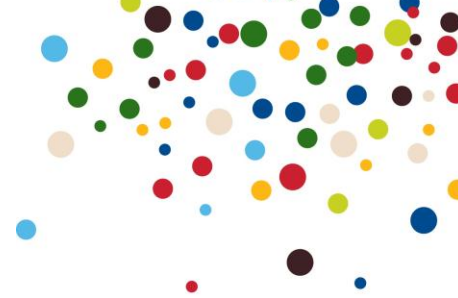
Cyprus North	34.440	41.328	29.232	35.078	27.720	33.264
Cyprus South	12.000	14.400	10.002	12.002	7.998	9.598
Czech Republic	12.000	14.400	10.002	12.002	7.998	9.598
Czech Republic (Mobile)	51.366	61.639	48.210	57.852	46.368	55.642
Denmark	12.000	14.400	10.002	12.002	7.998	9.598
Denmark (Mobile)	43.188	51.826	41.754	50.105	38.892	46.670
Diego Garcia	102.126	122.551	99.570	119.484	97.020	116.424
Djibouti	69.048	82.858	65.988	79.186	61.200	73.440
Dominica	39.816	47.779	33.600	40.320	31.920	38.304
Dominica (Mobile)	39.816	47.779	33.600	40.320	31.920	38.304
Dominican Republic	39.816	47.779	33.600	40.320	31.920	38.304
Dominican Republic (Mobile)	39.816	47.779	33.600	40.320	31.920	38.304
East Timor (Mobile)	89.358	107.230	86.808	104.170	84.252	101.102
Ecuador	69.048	82.858	65.988	79.186	61.200	73.440
Ecuador (Mobile)	69.048	82.858	65.988	79.186	61.200	73.440
Egypt	30.000	36.000	25.002	30.002	15.000	18.000
Egypt (Mobile)	30.000	36.000	25.002	30.002	15.000	18.000
Egypt ISDN Band 4	144.000	172.800	144.000	172.800	144.000	172.800
El Salvador	66.990	80.388	56.448	67.738	50.520	60.624
El Salvador (Mobile)	66.990	80.388	56.448	67.738	50.520	60.624
ELLIPSO	184.998	221.998	184.998	221.998	184.998	221.998
EMSAT Mobile Satellite	184.998	221.998	184.998	221.998	184.998	221.998
Equatorial Guinea	69.048	82.858	65.988	79.186	61.200	73.440
Eritrea	66.990	80.388	56.448	67.738	50.520	60.624
Estonia	30.000	36.000	25.002	30.002	15.000	18.000
ESTONIA - (MOBILE) was IM119	84.444	101.333	79.524	95.429	74.754	89.705
Ethiopia	66.990	80.388	56.448	67.738	50.520	60.624
Ethiopia (Mobile)	66.990	80.388	56.448	67.738	50.520	60.624
Falkland Islands	69.048	82.858	65.988	79.186	61.200	73.440

## Barclaycard Option 2 - No Longer Available



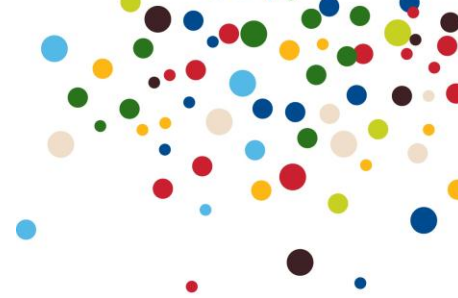
Faroe Islands	12.000	14.400	10.002	12.002	7.998	9.598
Fiji	69.048	82.858	65.988	79.186	61.200	73.440
Fiji (Mobile)	69.048	82.858	65.988	79.186	61.200	73.440
Finland	12.000	14.400	10.002	12.002	7.998	9.598
Finland (Mobile)	51.366	61.639	48.210	57.852	46.368	55.642
FM1 O2	13.620	16.344	10.212	12.254	4.260	5.112
FM2 Other	13.620	16.344	10.212	12.254	4.260	5.112
FM3 T-Mobile	13.620	16.344	10.212	12.254	4.260	5.112
FM4 Orange	13.620	16.344	10.212	12.254	4.260	5.112
FM5 Vodafone	13.620	16.344	10.212	12.254	4.260	5.112
FM6 Hutchison 3G	13.620	16.344	10.212	12.254	4.260	5.112
France (Mobile)	43.188	51.826	41.754	50.105	38.892	46.670
France Inc Monaco	12.000	14.400	10.002	12.002	7.998	9.598
Freephone	0.000	0.000	0.000	0.000	0.000	0.000
French Guiana (Mobile)	102.126	122.551	99.570	119.484	97.020	116.424
French Polynesia	102.126	122.551	99.570	119.484	97.020	116.424
Gabon	66.990	80.388	56.448	67.738	50.520	60.624
Gabon (Mobile)	66.990	80.388	56.448	67.738	50.520	60.624
Gambia	66.990	80.388	56.448	67.738	50.520	60.624
Georgia	30.000	36.000	25.002	30.002	15.000	18.000
Georgia (Mobile)	30.000	36.000	25.002	30.002	15.000	18.000
Germany	12.000	14.400	10.002	12.002	7.998	9.598
Germany (Mobile)	43.188	51.826	41.754	50.105	38.892	46.670
Ghana	66.990	80.388	56.448	67.738	50.520	60.624
Ghana (Mobile)	66.990	80.388	56.448	67.738	50.520	60.624
Gibraltar	12.000	14.400	10.002	12.002	7.998	9.598
GIBRALTER - (MOBILE)	48.936	58.723	44.148	52.978	41.202	49.442
Greece	12.000	14.400	10.002	12.002	7.998	9.598
Greece (Mobile)	48.936	58.723	44.148	52.978	41.202	49.442

## Barclaycard Option 2 - No Longer Available



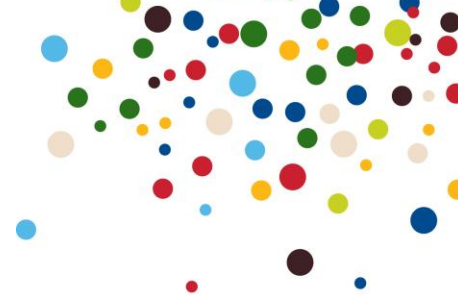
Greenland	69.048	82.858	65.988	79.186	61.200	73.440
Grenada	39.816	47.779	33.600	40.320	31.920	38.304
Guadeloupe	30.000	36.000	25.002	30.002	15.000	18.000
Guadeloupe (Mobile)	30.000	36.000	25.002	30.002	15.000	18.000
Guam	89.358	107.230	86.808	104.170	84.252	101.102
Guatemala	66.990	80.388	56.448	67.738	50.520	60.624
Guinea	69.048	82.858	65.988	79.186	61.200	73.440
Guinea (Mobile)	89.358	107.230	86.808	104.170	84.252	101.102
Guinea Bissau	89.358	107.230	86.808	104.170	84.252	101.102
Guyana	69.048	82.858	65.988	79.186	61.200	73.440
Guyana (Mobile)	69.048	82.858	65.988	79.186	61.200	73.440
Haiti	69.048	82.858	65.988	79.186	61.200	73.440
Haiti (Mobile)	69.048	82.858	65.988	79.186	61.200	73.440
Honduras	66.990	80.388	56.448	67.738	50.520	60.624
Hong Kong	18.000	21.600	12.000	14.400	7.998	9.598
Hong Kong (Mobile)	18.000	21.600	12.000	14.400	7.998	9.598
Hungary	12.000	14.400	10.002	12.002	7.998	9.598
Hungary (Mobile)	12.000	14.400	10.002	12.002	7.998	9.598
Iceland	34.440	41.328	29.232	35.078	27.720	33.264
ICELAND - (MOBILE) was IM131	34.440	41.328	29.232	35.078	27.720	33.264
India	40.002	48.002	34.998	41.998	30.000	36.000
India (Mobile)	40.002	48.002	34.998	41.998	30.000	36.000
Indonesia	55.200	66.240	52.440	62.928	48.960	58.752
INDONESIA - (MOBILE) was IM132	55.200	66.240	52.440	62.928	48.960	58.752
Information Services N	12.600	15.120	12.600	15.120	12.600	15.120
Inmarsat A	504.000	604.800	504.000	604.800	504.000	604.800
Inmarsat B	322.998	387.598	322.998	387.598	322.998	387.598
Inmarsat M & Mobiq	556.002	667.202	556.002	667.202	556.002	667.202
Iran	66.990	80.388	56.448	67.738	50.520	60.624

## Barclaycard Option 2 - No Longer Available



Iraq	66.990	80.388	56.448	67.738	50.520	60.624
Ireland Mobile	38.712	46.454	36.168	43.402	34.560	41.472
Ireland, Republic of	12.000	14.400	10.002	12.002	7.998	9.598
Iridium	300.000	360.000	300.000	360.000	300.000	360.000
Israel	30.000	36.000	25.002	30.002	15.000	18.000
Israel (Mobile)	84.444	101.333	79.524	95.429	74.754	89.705
Italy	12.000	14.400	10.002	12.002	7.998	9.598
Italy (Mobile)	48.936	58.723	44.148	52.978	41.202	49.442
Jamaica	39.816	47.779	33.600	40.320	31.920	38.304
Jamaica (Mobile)	39.816	47.779	33.600	40.320	31.920	38.304
Japan	34.440	41.328	29.232	35.078	27.720	33.264
Japan (Mobile)	74.736	89.683	66.492	79.790	64.098	76.918
Jordan	30.000	36.000	25.002	30.002	15.000	18.000
JORDAN - (MOBILE) was IM134	30.000	36.000	25.002	30.002	15.000	18.000
Kazakhstan	30.000	36.000	25.002	30.002	15.000	18.000
Kenya	66.990	80.388	56.448	67.738	50.520	60.624
Kenya (Mobile)	66.990	80.388	56.448	67.738	50.520	60.624
Kiribati	89.358	107.230	86.808	104.170	84.252	101.102
Korea PD	89.358	107.230	86.808	104.170	84.252	101.102
Korea Republic South	55.200	66.240	52.440	62.928	48.960	58.752
Krygyzstan Mobile	30.000	36.000	25.002	30.002	15.000	18.000
Kuwait	30.000	36.000	25.002	30.002	15.000	18.000
Kuwait (Mobile)	30.000	36.000	25.002	30.002	15.000	18.000
Kyrgystan	30.000	36.000	25.002	30.002	15.000	18.000
Laos	69.048	82.858	65.988	79.186	61.200	73.440
Laos (Mobile)	69.048	82.858	65.988	79.186	61.200	73.440
Latvia	30.000	36.000	25.002	30.002	15.000	18.000
Latvia (Mobile)	30.000	36.000	25.002	30.002	15.000	18.000
Lebanon	30.000	36.000	25.002	30.002	15.000	18.000

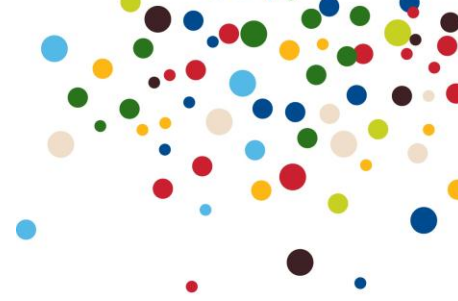
## Barclaycard Option 2 - No Longer Available



Lebanon (Mobile)	30.000	36.000	25.002	30.002	15.000	18.000
Leichtenstein (Mobile)	43.188	51.826	41.754	50.105	38.892	46.670
Lesotho	66.990	80.388	56.448	67.738	50.520	60.624
Liberia	66.990	80.388	56.448	67.738	50.520	60.624
Liberia (Mobile)	66.990	80.388	56.448	67.738	50.520	60.624
Libya	34.440	41.328	29.232	35.078	27.720	33.264
Liechtenstein	12.000	14.400	10.002	12.002	7.998	9.598
Lithuania	30.000	36.000	25.002	30.002	15.000	18.000
Lithuania (Mobile)	30.000	36.000	25.002	30.002	15.000	18.000
Local	2.130	2.556	0.852	1.022	0.852	1.022
Luxembourg	12.000	14.400	10.002	12.002	7.998	9.598
Luxembourg (Mobile)	43.188	51.826	41.754	50.105	38.892	46.670
Macao	55.200	66.240	52.440	62.928	48.960	58.752
Macedonia	34.440	41.328	29.232	35.078	27.720	33.264
Macedonia (Mobile)	34.440	41.328	29.232	35.078	27.720	33.264
Madagascar	69.048	82.858	65.988	79.186	61.200	73.440
Madagascar (Mobile)	69.048	82.858	65.988	79.186	61.200	73.440
Madeira	12.000	14.400	10.002	12.002	7.998	9.598
Malawi	66.990	80.388	56.448	67.738	50.520	60.624
Malaysia	34.440	41.328	29.232	35.078	27.720	33.264
Malaysia (Mobile)	34.440	41.328	29.232	35.078	27.720	33.264
Maldives Islands	69.048	82.858	65.988	79.186	61.200	73.440
Mali	69.048	82.858	65.988	79.186	61.200	73.440
Malta	12.000	14.400	10.002	12.002	7.998	9.598
Malta (Mobile)	51.366	61.639	48.210	57.852	46.368	55.642
Mariana Islands	89.358	107.230	86.808	104.170	84.252	101.102
Marshall Islands	102.126	122.551	99.570	119.484	97.020	116.424
Martinique	30.000	36.000	25.002	30.002	15.000	18.000
Martinique (Mobile)	30.000	36.000	25.002	30.002	15.000	18.000



## Barclaycard Option 2 - No Longer Available



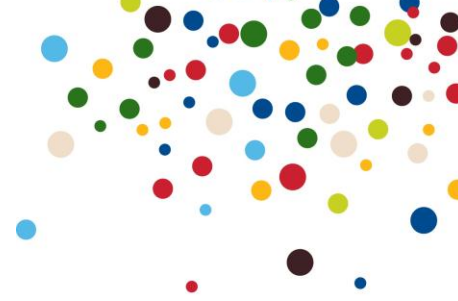
Mauratania Mobile	69.048	82.858	65.988	79.186	61.200	73.440
Mauritania	69.048	82.858	65.988	79.186	61.200	73.440
Mauritius	66.990	80.388	56.448	67.738	50.520	60.624
Mexico	55.200	66.240	52.440	62.928	48.960	58.752
Mexico (Mobile)	55.200	66.240	52.440	62.928	48.960	58.752
Micronesia	102.126	122.551	99.570	119.484	97.020	116.424
Mobile FM7	13.200	15.840	7.200	8.640	6.402	7.682
Moldova	30.000	36.000	25.002	30.002	15.000	18.000
Moldova (Mobile)	30.000	36.000	25.002	30.002	15.000	18.000
Monaco	12.000	14.400	10.002	12.002	7.998	9.598
Monaco (Mobile)	43.188	51.826	41.748	50.098	38.892	46.670
Mongolia	69.048	82.858	65.988	79.186	61.200	73.440
Monserrat	39.816	47.779	33.600	40.320	31.920	38.304
Montserrat (Mobile)	39.816	47.779	33.600	40.320	31.920	38.304
Morocco	34.440	41.328	29.232	35.078	27.720	33.264
Mozambique	69.048	82.858	65.988	79.186	61.200	73.440
Mozambique (Mobile)	69.048	82.858	65.988	79.186	61.200	73.440
Myanmar (Burma)	89.358	107.230	86.808	104.170	84.252	101.102
Namibia	66.990	80.388	56.448	67.738	50.520	60.624
National	2.130	2.556	0.852	1.022	0.852	1.022
Nauru	89.358	107.230	86.808	104.170	84.252	101.102
Nepal	55.200	66.240	52.440	62.928	48.960	58.752
Netherland (Mobile)	43.188	51.826	41.754	50.105	38.892	46.670
Netherlands	12.000	14.400	10.002	12.002	7.998	9.598
New Caledonia	102.126	122.551	99.570	119.484	97.020	116.424
New Caledonia (Mobile)	102.126	122.551	99.570	119.484	97.020	116.424
New Zealand	18.000	21.600	12.000	14.400	7.998	9.598
New Zealand (Mobile)	59.820	71.784	54.096	64.915	51.822	62.186
Nicaragua	66.990	80.388	56.448	67.738	50.520	60.624

# Barclaycard Option 2 - No Longer Available



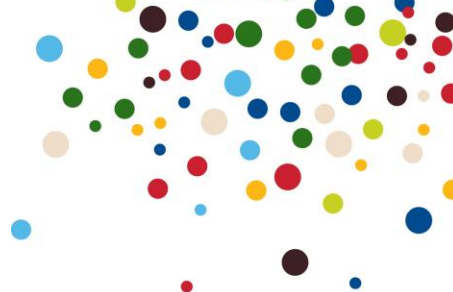
Niger	69.048	82.858	65.988	79.186	61.200	73.440
Niger (Mobile)	69.048	82.858	65.988	79.186	61.200	73.440
Nigeria	53.592	64.310	50.520	60.624	45.420	54.504
Nigeria (Mobile)	53.592	64.310	50.520	60.624	45.420	54.504
Niue	69.048	82.858	65.988	79.186	61.200	73.440
Norfolk Islands	69.048	82.858	65.988	79.186	61.200	73.440
North Mariana Island	89.358	107.230	86.808	104.170	84.252	101.102
Norway	12.000	14.400	10.002	12.002	7.998	9.598
Norway (Mobile)	43.188	51.826	41.754	50.105	38.892	46.670
Oman	30.000	36.000	25.002	30.002	15.000	18.000
Oman (Mobile)	30.000	36.000	25.002	30.002	15.000	18.000
Pakistan	30.000	36.000	25.002	30.002	19.998	23.998
Pakistan (Mobile)	30.000	36.000	25.002	30.002	19.998	23.998
Palau	89.358	107.230	86.808	104.170	84.252	101.102
Panama	66.990	80.388	56.448	67.738	50.520	60.624
Panama (Mobile)	66.990	80.388	56.448	67.738	50.520	60.624
Papua New Guinea	69.048	82.858	65.988	79.186	61.200	73.440
Paraguay	66.990	80.388	56.448	67.738	50.520	60.624
Paraguay (Mobile)	66.990	80.388	56.448	67.738	50.520	60.624
Peru	66.990	80.388	56.448	67.738	50.520	60.624
Peru (Mobile)	66.990	80.388	56.448	67.738	50.520	60.624
Philippines	55.200	66.240	52.440	62.928	48.960	58.752
Poland	12.000	14.400	10.002	12.002	7.998	9.598
Poland (Mobile)	12.000	14.400	10.002	12.002	7.998	9.598
Portugal	12.000	14.400	10.002	12.002	7.998	9.598
Portugal (Mobile)	48.936	58.723	44.148	52.978	41.202	49.442
Puerto Rico	39.816	47.779	33.600	40.320	31.920	38.304
Qatar	30.000	36.000	25.002	30.002	15.000	18.000
Reunion	69.048	82.858	65.988	79.186	61.200	73.440

# Barclaycard Option 2 - No Longer Available



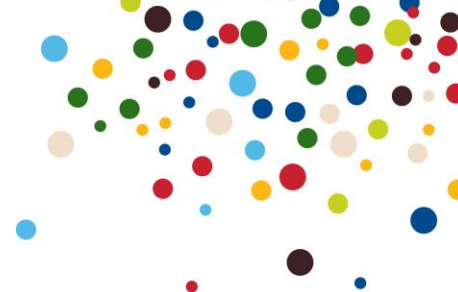
Reunion (Mobile)	69.048	82.858	65.988	79.186	61.200	73.440
Romania	30.000	36.000	25.002	30.002	15.000	18.000
Romania (Mobile)	30.000	36.000	25.002	30.002	15.000	18.000
Russia	30.000	36.000	25.002	30.002	15.000	18.000
Russia (Mobile)	30.000	36.000	25.002	30.002	15.000	18.000
Rwanda	69.048	82.858	65.988	79.186	61.200	73.440
Rwanda (Mobile)	69.048	82.858	65.988	79.186	61.200	73.440
Samoa US	89.358	107.230	86.808	104.170	84.252	101.102
Samoa West	102.126	122.551	99.570	119.484	97.020	116.424
San Marino	34.440	41.328	29.232	35.078	27.720	33.264
Sao Tome & Principe	69.048	82.858	65.988	79.186	61.200	73.440
Sao Tome & Principe (Mobile)	69.048	82.858	65.988	79.186	61.200	73.440
Saudi Arabia	30.000	36.000	25.002	30.002	15.000	18.000
Saudi Arabia (Mobile)	30.000	36.000	25.002	30.002	15.000	18.000
Senegal	66.990	80.388	56.448	67.738	50.520	60.624
Seychelles	66.990	80.388	56.448	67.738	50.520	60.624
Seychelles (Mobile)	66.990	80.388	56.448	67.738	50.520	60.624
Sierra Leone	66.990	80.388	56.448	67.738	50.520	60.624
Singapore	18.000	21.600	12.000	14.400	7.998	9.598
Singapore (Mobile)	18.000	21.600	12.000	14.400	7.998	9.598
Slovakia	12.000	14.400	10.002	12.002	7.998	9.598
Slovakia (Mobile)	12.000	14.400	10.002	12.002	7.998	9.598
Slovenia	34.440	41.328	29.232	35.078	27.720	33.264
Slovenia (Mobile)	74.736	89.683	66.492	79.790	64.098	76.918
Solomon Islands	102.126	122.551	99.570	119.484	97.020	116.424
Somalia	89.358	107.230	86.808	104.170	84.252	101.102
South Africa	30.000	36.000	25.002	30.002	15.000	18.000
South Africa (Mobile)	84.444	101.333	79.524	95.429	74.754	89.705
South Korea (Mobile)	55.200	66.240	52.440	62.928	48.960	58.752

## Barclaycard Option 2 - No Longer Available



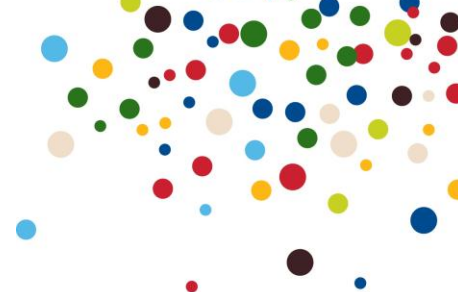
Spain	12.000	14.400	10.002	12.002	7.998	9.598
Spain (Mobile)	48.936	58.723	44.148	52.978	41.202	49.442
Sri Lanka	30.000	36.000	25.002	30.002	19.998	23.998
Sri Lanka (Mobile)	30.000	36.000	25.002	30.002	19.998	23.998
St Helena	69.048	82.858	65.988	79.186	61.200	73.440
St Kitts & Nevis	39.816	47.779	33.600	40.320	31.920	38.304
St Lucia	39.816	47.779	33.600	40.320	31.920	38.304
St Lucia (Mobile)	39.816	47.779	33.600	40.320	31.920	38.304
St Pierre	39.816	47.779	33.600	40.320	31.920	38.304
St Pierre & Miquelon (Mobile)	39.816	47.779	33.600	40.320	31.920	38.304
St Vincent	39.816	47.779	33.600	40.320	31.920	38.304
St Vincent & Grenadines (Mobile)	39.816	47.779	33.600	40.320	31.920	38.304
Sudan	66.990	80.388	56.448	67.738	50.520	60.624
Surinam	66.990	80.388	56.448	67.738	50.520	60.624
Surinam (Mobile)	66.990	80.388	56.448	67.738	50.520	60.624
Swaziland	66.990	80.388	56.448	67.738	50.520	60.624
Sweden	12.000	14.400	10.002	12.002	7.998	9.598
Sweden (Mobile)	43.188	51.826	41.754	50.105	38.892	46.670
Switzerland	12.000	14.400	10.002	12.002	7.998	9.598
Switzerland (Mobile)	43.188	51.826	41.754	50.105	38.892	46.670
Syria	30.000	36.000	25.002	30.002	15.000	18.000
Taiwan	55.200	66.240	52.440	62.928	48.960	58.752
Taiwan (Mobile)	55.200	66.240	52.440	62.928	48.960	58.752
Tajikistan	69.048	82.858	65.988	79.186	61.200	73.440
Tajikistan (Mobile)	69.048	82.858	65.988	79.186	61.200	73.440
Tanzania	66.990	80.388	56.448	67.738	50.520	60.624
Tanzania (Mobile)	66.990	80.388	56.448	67.738	50.520	60.624
Thailand	55.200	66.240	52.440	62.928	48.960	58.752
THAILAND - (MOBILE) was IM171	55.200	66.240	52.440	62.928	48.960	58.752

## Barclaycard Option 2 - No Longer Available



Thuraya Mobile	300.000	360.000	300.000	360.000	300.000	360.000
Togo	66.990	80.388	56.448	67.738	50.520	60.624
Togo (Mobile)	66.990	80.388	56.448	67.738	50.520	60.624
Tokelau	102.126	122.551	99.570	119.484	97.020	116.424
Tonga	69.048	82.858	65.988	79.186	61.200	73.440
Tonga (Mobile)	69.048	82.858	65.988	79.186	61.200	73.440
Trinidad & Tobago	39.816	47.779	33.600	40.320	31.920	38.304
Trinidad & Tobago (Mobile)	39.816	47.779	33.600	40.320	31.920	38.304
Tunisia	34.440	41.328	29.232	35.078	27.720	33.264
Tunisia (Mobile)	34.440	41.328	29.232	35.078	27.720	33.264
Turkey	34.440	41.328	29.232	35.078	27.720	33.264
Turkey (Mobile)	34.440	41.328	29.232	35.078	27.720	33.264
Turkmenistan	69.048	82.858	65.988	79.186	61.200	73.440
Turks & Caicos Island	39.816	47.779	33.600	40.320	31.920	38.304
Turks & Caicos Island (Mobile)	39.816	47.779	33.600	40.320	31.920	38.304
Tuvalu	89.358	107.230	86.808	104.170	84.252	101.102
Tuvalu (Mobile)	89.358	107.230	86.808	104.170	84.252	101.102
UAE	30.000	36.000	25.002	30.002	15.000	18.000
UAE (Mobile)	30.000	36.000	25.002	30.002	15.000	18.000
Uganda	66.990	80.388	56.448	67.738	50.520	60.624
Ukraine	30.000	36.000	25.002	30.002	15.000	18.000
Uruguay	66.990	80.388	56.448	67.738	50.520	60.624
USA	12.000	14.400	10.002	12.002	7.998	9.598
Uzbekistan	30.000	36.000	25.002	30.002	15.000	18.000
Vanuatu	89.358	107.230	86.808	104.170	84.252	101.102
Vatican City	12.000	14.400	10.002	12.002	7.998	9.598
Vatican ISDN Band 2	64.260	77.112	64.260	77.112	64.260	77.112
Venezuela	66.990	80.388	56.448	67.738	50.520	60.624
Venezuela (Mobile)	66.990	80.388	56.448	67.738	50.520	60.624

## Barclaycard Option 2 - No Longer Available



Vietnam	69.048	82.858	65.988	79.186	61.200	73.440
Vietnam (Mobile)	69.048	82.858	65.988	79.186	61.200	73.440
Virgin Islands British	39.816	47.779	33.600	40.320	31.920	38.304
Virgin Islands US	39.816	47.779	33.600	40.320	31.920	38.304
Yemen	66.990	80.388	56.448	67.738	50.520	60.624
Yemen (Mobile)	66.990	80.388	56.448	67.738	50.520	60.624
Yugoslavia	34.440	41.328	29.232	35.078	27.720	33.264
Zaire	69.048	82.858	65.988	79.186	61.200	73.440
Zambia	66.990	80.388	56.448	67.738	50.520	60.624
Zimbabwe	66.990	80.388	56.448	67.738	50.520	60.624
Zimbabwe (Mobile)	66.990	80.388	56.448	67.738	50.520	60.624

### Time Periods

<b>Daytime Rate</b>	Monday ~ Friday, 8am ~ 6pm
<b>Evening Rate</b>	Monday ~ Friday, before 8am and after 6pm
<b>Weekend Rate</b>	All Day Saturday and Sunday

All Calls are subject to a minimum charge of 3.53p Inc. VAT.

Barclaycard Non-Geographic Call Rates are available [here](#)

[\*Return to the top\*](#)