

The Corporate tariff is recommended for a minimum of 75 users and applies where the customer has provided a direct communication link between the customer’s PBX or private network and the KC / O₂ network, and where the numbers for the customer’s mobile phones contracted for use on the KC / O₂ network have been integrated into the numbering plan for the customer’s PBX or private network.

If the direct communication link is used for calls which terminate off the customer’s private network KC / O₂ shall have the right to terminate the connection of that direct communication link to the KC / O₂ network and to charge for such calls made from mobile telephones at the appropriate Off-Net Rate.

[Please click here for details of the Business Zones discount package](#)

Connection and Subscription Charges

01/01/10	Connection Charge		Monthly Rental	
	Ex VAT	Inc. VAT	Ex VAT	Inc. VAT
Standard	£29.79	£35.748	£13.00	£15.60

Corporate Worker with xNet Tariff

For a monthly fee of £25.00 exc. VAT (**£30.00** Inc. VAT), Corporate Worker with xNet offers free On-Net Calls and reduced x-Net mobile charges. All other call charges remain the same.

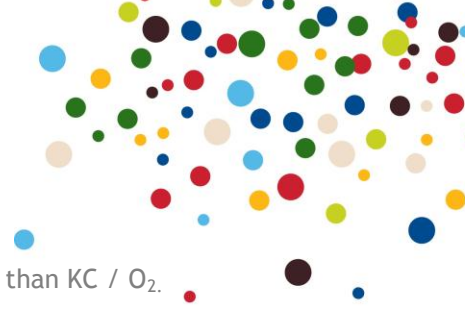
Call Charges - On Net

01/01/10	At All Times	
	Ex VAT	Inc. VAT
Corporate Mobile to PBX	0.00p	
Corporate Mobile to Corporate Mobile	0.00p	
PBX to Corporate Mobile	0.00p	

On-Net calls are those which are made within the customer’s private network, i.e. Corporate Mobile to PBX or private network, PBX or private network to Corporate Mobile and Corporate Mobile to Corporate Mobile. The same customer (i.e. individual, company, partnership, etc.) must be the contracted user of the telephone numbers from which, and to which, the call is made.

All xNet calls will be reduced to the following:

01/01/10	Peak		Off-Peak		Weekend	
	Ex VAT	Inc. VAT	Ex VAT	Inc. VAT	Ex VAT	Inc. VAT
Calls to non- KC / O ₂ mobile phone numbers	12.50p	15.00p	10.00p	12.00p	10.00p	12.00p



The definition of a x-Net call is calls that are made to another mobile network, other than KC / O₂.

Call Types

On-Net calls

On-Net calls are those which are made within the customer's private network, i.e. Corporate Mobile to PBX or private network, PBX or private network to Corporate Mobile and Corporate Mobile to Corporate Mobile. The same customer (i.e. individual, company, partnership, etc.) must be the contracted user of the telephone numbers from which, and to which, the call is made.

Off-Net calls

Off-Net calls are calls originated from a Corporate Mobile and not routed through the direct communication link between the customer's PBX or private network and the KC / O₂ Network.

Call Charges

Call Charges - On Net

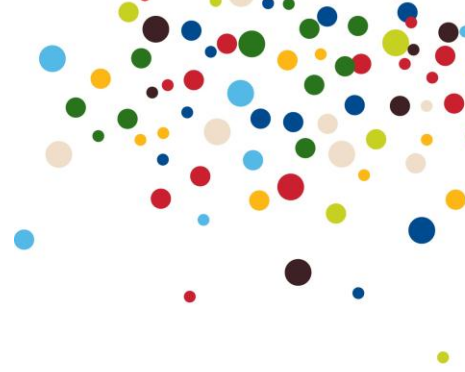
01/01/2010	Peak		Off-Peak		Weekend	
	Ex VAT	Inc. VAT	Ex VAT	Inc. VAT	Ex VAT	Inc. VAT
Corporate Mobile to PBX	4.000	4.800	4.000	4.800	1.710	2.052
Corporate Mobile to Corporate Mobile	4.000	4.800	4.000	4.800	1.710	2.052
PBX to Corporate Mobile	6.000	7.200	4.000	4.800	4.000	4.800

The above charges apply where calls are placed using the extension number or site location code and extension number as the dialled digits. Calls placed using any other dialled digit strings to On-Net numbers from the Corporate Mobile are charged at off-net rates, unless the customer has "Forced On-Net Billing" (see [below](#)).

PBX to Corporate Mobile charges also apply to calls from the PSTN to DDI (direct dial in) Mobile Extension numbers for the 'On-Net' portion of the call from the private network to the Mobile Extension.

All calls are charged per second with a minimum charge of 1.70p Exc. VAT (**2.04p** Inc VAT). The above rates are shown as pence per minute.

See [below](#) for time bands.



Forced On-Net Billing

This feature is free of charge but must be requested. Fixed dial plan data must be supplied by the customer in order for this feature to be provided. When provided, calls made from the Corporate Mobile to On-Net numbers, regardless of dialled digit string used*, will be charged at On-Net rates.

*Dialled digit string formats:

From Corporate Mobile to fixed extension number in corporate dial plan
 Fixed Extension Number e.g. 2245
 Site Location Code and Extension Number e.g. 741 2245
 Local Number e.g. 272 2245
 National Number e.g. 0113 272 2245
 International Number Format #1 e.g. 0044 113 272 2245
 International Number Format #2 e.g. +44 113 272 2245
 From Corporate Mobile to Corporate Mobile
 Mobile Extension Number e.g. 3102
 Site Location Code and Mobile Extension Number e.g. 731 3102
 Mobile DDI Local Number e.g. 202 3102
 Mobile DDI National Number e.g. 0113 202 3102
 International Mobile DDI Number Format #1 e.g. 0044 113 202 3102
 International Mobile DDI Number Format #2 e.g. +44 113 202 3102
 MSISDN e.g. 0411 107438
 International MSISDN Format #1 e.g. 0044 411 107438
 International MSISDN Format #2 e.g. +44 411 107438

Call Charges - Off Net

Standard Call Charges

Calls made to all UK numbers for which no other charge is shown in this Part of the Price Manual are charged at the following rates per minute:

01/01/10	Peak		Off-Peak		Weekend	
	Ex VAT	Inc. VAT	Ex VAT	Inc. VAT	Ex VAT	Inc. VAT
Standard Calls	7.50p	9.00p	7.00p	8.40p	1.71p	2.05p

All calls are charged per second with a minimum charge of 1.70p Exc. VAT (**2.04p** Inc. VAT). The above rates are shown as pence per minute.

See [below](#) for time bands.



Mobile to Mobile Call Charges

01/01/2010	Peak		Off-Peak		Weekend	
	Ex VAT	Inc. VAT	Ex VAT	Inc. VAT	Ex VAT	Inc. VAT
Calls to KC / O ₂ mobile phone numbers	6.000	7.200	6.000	7.200	6.000	7.200
Calls to non- KC / O ₂ mobile phone numbers	25.000	30.000	20.000	24.000	20.000	24.000

All calls are charged per second with a minimum charge of 1.70p Exc. VAT (**2.04p** Inc. VAT). The above rates are shown as pence per minute. Calls to numbers which have been ported to KC / O₂ will be charged at the KC / O₂ rate.

See [below](#) for time bands.

PBX to Mobile Call Charges

01/01/2010	Peak		Off-Peak		Weekend	
	Ex VAT	Inc. VAT	Ex VAT	Inc. VAT	Ex VAT	Inc. VAT
Calls from PBX to KC / O ₂ mobile phone numbers	13.00	15.60	6.00	7.20	6.00	7.20
Calls from PBX to non- KC / O ₂ mobile phone numbers	16.00	19.20	12.00	14.40	6.00	7.20

All calls are charged per second with no minimum charge. The above rates are shown as pence per minute. Calls to numbers which have been ported to KC / O₂ will be charged at the KC / O₂ rate.

See [below](#) for time bands.

Premium Rate Service calls

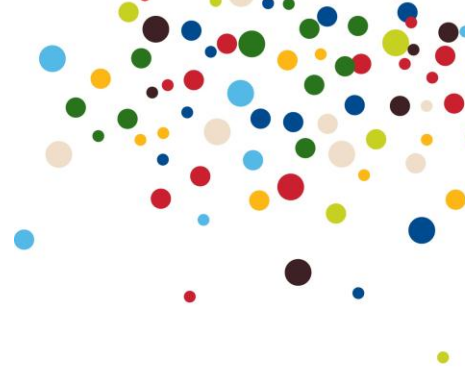
Please refer to the [Premium Rates](#) section.

International calls

Customers will be charged the [International Traveller Service](#) rates as detailed in that section of the Price Manual. Alternatively customers can receive lower rates at an additional charge by subscribing to the [Country Calling Plan](#).

Roaming calls

Customers will be charged the [International Traveller Service](#) rates as detailed in that section of the Price Manual.



Message and Fax Retrieval Calls

Calls to 901 are charged at the following rates.

01/01/10	Peak		Off-Peak		Weekend	
	Ex VAT	Inc. VAT	Ex VAT	Inc. VAT	Ex VAT	Inc. VAT
901 Service	7.50p	9.00p	7.00p	8.40p	1.71p	2.05p

Text Messaging

01/01/10	Per Message	
	Ex VAT	Inc. VAT
Text Messaging	10.21p	12.025

See the [international roaming](#) section for the charges for text messages sent while abroad.

Multimedia Messaging

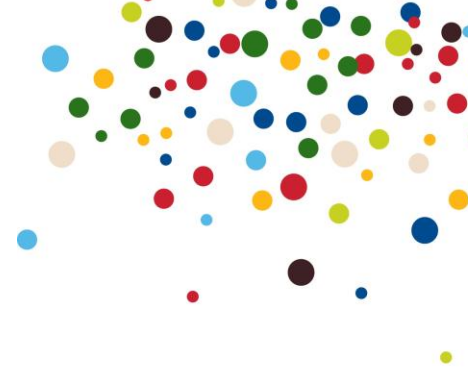
01/01/10	Per Message	
	Ex VAT	Inc. VAT
Standard Multimedia Messaging	21.277p	25.532p
Multimedia Messaging to international numbers from the UK	21.277p	25.532p

Calls to the WAP (Wireless Application Protocol) Service

Calls made to short code 915000 or +447712927927 are charged at the following rate per minute:

01/01/10	At Any Time	
	Ex VAT	Inc. VAT
WAP	7.00p	8.40p

All calls are charged per minute with a minimum charge of 3.40p Exc. VAT (**4.08p** Inc. VAT). The above rates are shown as pence per minute.



Directory Enquiries and International Directory Enquiries

Please refer to the [Directory Enquiries](#) section of the Price Manual.

Value Added Services

Please refer to the [Value Added Services](#) section of the Price Manual.

Billing

Itemised billing is provided free of charge with this service.

Additional Network Features

The following features are available free of charge:

- Divert on busy
- Divert on no answer
- Divert on not reachable
- Divert all calls
- Customer controlled call barring
- Call hold
- Call waiting
- Conference call
- Forced on net billing

Cancellation Charges

Cancellation is only possible after 90 days from the commencement of service. The charge for cancellation of the contract is the total of, the charge for the current month when cancellation is requested plus the subscription charge applicable for 60 days. In addition the outstanding balance of the cost of the handset must be paid. All elements are to be paid in full in the final bill.

Time Bands

Peak	Monday ~ Friday, 7am ~ 7pm
Off-Peak	Monday ~ Friday, 7pm ~ 7am
Weekend	All Day Saturday and Sunday

Call Discount Plans

[Please click here for details of the Business Zones discount package](#)

N.B. Please note discounts are optional and cannot normally be used in conjunction with other offers or agreements that are based on historic or forecast call behaviour.

Customers may be eligible for one of two discount schemes i.e. Calls to five nominated numbers or discount rewards based on total spend by each call group or mobile numbers under a customer reference.

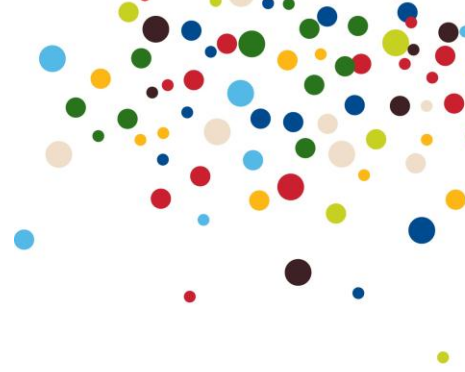
Customers can have one but not both schemes at any one time.



1. Customers can select a 10% discount on five selected numbers (see table below for eligible and ineligible number types).

Corporate Price Plan	Selected
Corporate Mobile - PBX	No
PBX - Corporate Mobile	No
Corporate Mobile - Corporate Mobile	No
UK Numbers	Yes
Mobile - KC / O ₂ Mobile	Yes
Message Retrieval	No
Mobile - Mobile	Yes
PBX - KC / O ₂ Mobile	No
PBX - Mobile	No
WAP	No
Text	No
Premium Rate	No
International	No
Unknown	No

[Return to the top](#)



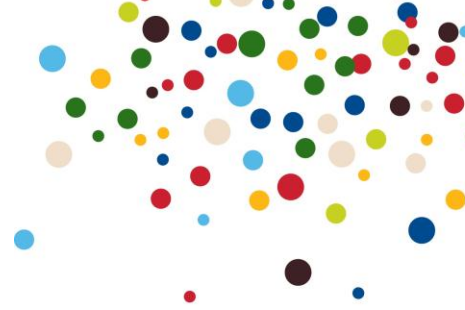
2. Customers can receive a discount based on the total call spend of call group under the same contract ID, or ungrouped mobile numbers under a customer reference, per month. Discount percentage is only applicable to the calls specified the tables below.

From Amount	To Amount	% Discount
£0.00	£99.99	0%
£100.00	£199.99	2%
£200.00	£299.99	3%
£300.00	£399.99	4%
£400.00	£499.99	5%
£500.00	£599.99	6%
£600.00	£699.99	7%
£700.00	£799.99	8%
£800.00	£899.99	9%
£900.00	£999.99	10%
£1,000.00	£1,499.99	12%
£1,500.00	£2,499.99	13%
£2,500.00	£3,999.99	14%
£4,000.00	£6,999.99	15%
£7,000.00	£9,999.99	16%
£10,000.00	£10,999.99	17%
£11,000.00	£11,999.99	18%
£12,000.00	£12,999.99	19%
£13,000.00	£13,999.99	20%
£14,000.00	£14,999.99	21%
£15,000.00	and above	22%



Proud to be part
of local life

Corporate Business User



Corporate Price Plan	Call Discount
Corporate Mobile - PBX	No
PBX - Corporate Mobile	No
Corporate Mobile - Corporate Mobile	No
UK Numbers	Yes
Mobile - KC / O ₂ Mobile	Yes
Message Retrieval	Yes
Mobile - Mobile	Yes
PBX - KC / O ₂ Mobile	No
PBX - Mobile	No
WAP	No
Text	No
Premium Rate	No
International	No
Unknown	No
Directory Enquiries	No
Media Messages	No