



Proud to be part of local life

Mobile Data



KC Business Mobile Data tariffs

All of the following price plans can be used with Kingston's Mobile LAN Access and / or Mobile Web services, using O2's GPRS network.

Mobile Data Tariff	MB In Bundle	MB In Bundle (Roaming)	Monthly Charge		Per Extra MB		Bundle Roll-Over
			Ex VAT	Inc. VAT	Ex VAT	Inc. VAT	
Mobile Data Only Tariffs							
KC Tracker Tariff* (Not available for new supply)	5	N/A	£0.00	£0.00	£1.00	£1.20	3 Months
Mobile JustData-5	5	N/A	£8.00	£9.60	£1.00	£1.20	3 Months
Mobile JustData-20	20	N/A	£11.00	£13.20	£1.00	£1.20	0 Months
Mobile JustData-20 (Not available for new supply)	20	N/A	£24.00	£28.80	£0.85	£1.02	3 Months
Mobile JustData-36	36	N/A	£14.50	£17.40	£0.85	£1.02	3 Months
Mobile JustData-75	75	N/A	£18.50	£22.20	£0.75	£0.90	3 Months
Mobile JustData-200 (Not available for new supply)	200	N/A	£25.00	£30.00	£0.60	£0.72	3 Months
Mobile JustData-250 (Not available for new supply)	250	N/A	£25.00	£30.00	£0.75	£0.90	3 Months
Mobile JustData-512 † (Not available for new supply)	512	N/A	£40.00	£48.00	£0.75	£0.90	3 Months
Mobile JustData-1024 † (Not available for new supply)	1024	N/A	£45.00	£54.00	£0.75	£0.90	N/A
Data Only Worker **	3072	N/A	£25.00	£30.00	*		0 Months
Data Only Worker Roaming 10 Mb **	3072	10	£35.00	£42.00	*		0 Months
Data Only Worker Roaming 50 Mb **	3072	50	£60.00	£72.00	*		0 Months
Data Only Worker Roaming 200 Mb **	3072	200	£95.00	£114.00	*		0 Months
Mobile Data With Voice Tariffs							
Pay As You Use Data	0.5	N/A	£0.00	£0.00	£1.80	£2.16	N/A
Mobile Data5	5	N/A	£5.00	£6.00	£1.00	£1.20	3 Months
Mobile Data20 (Not available for new supply)	20	N/A	£8.51	£10.21	£1.00	£1.20	0 Months
Mobile Data20 (Not available for new supply)	20	N/A	£24.00	£28.80	£0.85	£1.02	3 Months
Mobile Data36 (Not available for new supply)	36	N/A	£14.50	£17.40	£1.00	£1.20	3 Months
Mobile Data75 (Not available for new supply)	75	N/A	£18.50	£22.20	£0.75	£0.90	3 Months
Mobile Data200 (Not available for new supply)	200	N/A	£25.00	£30.00	£0.60	£0.72	3 Months
Mobile Data250 (Not available for new supply)	250	N/A	£25.00	£30.00	£0.75	£0.90	3 Months
Mobile Data512 (Not available for new supply)	512	N/A	£40.00	£48.00	£0.75	£0.90	3 Months
Mobile Data1024 (Not available for new supply)	1024	N/A	£45.00	£54.00	£0.75	£0.90	3 Months
Data 200	200	N/A	£6.38	£7.66	*	N/A	0 Months



Proud to be part
of local life

Mobile Data



Data 200 Roaming 10Mb	200	10	£16.38	£19.66	*	N/A	0 Months
Data 200 Roaming 50Mb	3072	50	£41.38	£49.66	*	N/A	0 Months
Data 200 Roaming 200Mb	3072	200	£81.38	£97.66	*	N/A	0 Months
Data Worker **	3072	N/A	£25.00	£30.00	*	N/A	0 Months
Data Worker Roaming 10Mb**	3072	10	£35.00	£42.00	*	N/A	0 Months
Data Worker Roaming 50Mb **	3072	50	£60.00	£72.00	*	N/A	0 Months
Data Worker Roaming 200Mb **	3072	200	£95.00	£114.00	*	N/A	0 Months

* Any usage outside of this fair usage bundle is chargeable at the discretion of KC.

** These tariffs also include 30 minutes of WLAN.

Data Roaming

Roaming Charges	Inside EU		Outside EU	
	Ex VAT	Inc. VAT	Ex VAT	Inc. VAT
Per Extra MB	£2.55	£3.06	£6.00	£7.20

There are no rollover minutes associated with these tariffs.

Notes:

- Charges are made only for data received and sent.
- With roaming there is a minimum charge of for data usage of 200kB per day (24 hours ending midnight UK time), per Access Point Node (APN) and per foreign network operator of £1.17 exc. VAT (£1.404 inc. VAT)
- Charging is in 1KB increments
- Charges apply at all times of day
- 1 MB is 1,024 KB

Conditions - Data Only Tariffs

Data 200 - this proposition offers an unlimited inclusive browse and downloads allowance (subject to a fair usage policy+).

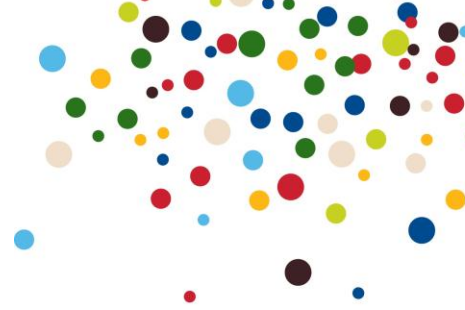
Data 200 Roaming 10MB - this proposition offers an unlimited inclusive browse and download allowance (subject to a fair usage policy+) within the UK and 10Mb while outside the UK.

Data 200 Roaming 50MB - this proposition offers an unlimited inclusive browse and download allowance (subject to a fair usage policy+) within the UK and 10Mb while outside the UK.

Data 200 Roaming 200MB - this proposition offers an unlimited inclusive browse and download allowance (subject to a fair usage policy+) within the UK and 10Mb while outside the UK.

Roaming usage outside of the bundle allowances' will be charged at £2.55 exc. VAT (£3.00 inc. VAT) inside the EU and £6.00 per MB exc. VAT (£7.05 Inc. VAT).

+Subject to a 200 MB per month fair usage policy



Conditions - Data with Voice Tariffs

Data Worker & Data Only Worker these propositions offer an unlimited inclusive browse and download allowance (subject to a fair usage policy++)

Data Worker Roaming 10MB & Data Only Worker Roaming 10MB these propositions offer an unlimited inclusive browse and download allowance (subject to a fair usage policy++).

Data Worker Roaming 50MB & Data Only Worker Roaming 50MB these propositions offer an unlimited inclusive browse and download allowance (subject to a fair usage policy++).

Data Worker Roaming 200MB this proposition offers an unlimited inclusive browse and downloads allowance (subject to a fair usage policy++) within the UK and 10Mb while outside the UK.

++Subject to a 3072 MB per month fair usage policy

*The KC Tracker Tariff is only available when taken in conjunction with a KC Tracker product, as the associated charges will be incurred as part of the KC Tracker pricing. Any overage or international usage will be charged on a monthly basis.

Connectivity Links for Data Bearer Service

Customers requiring data access to their corporate LAN will require a connection to the O₂ network. Two alternatives are available:-

a) GPRS DataLink

This is a private circuit service designed specifically for the transmission of GPRS data only. The service complements the portfolio of Link products (Link and Link 60) and provides the same benefits of a fully managed service, including the provision and maintenance of routers in customer premises. Similarly, the contract for service is directly between the customer and O₂.

Four Bandwidth Options

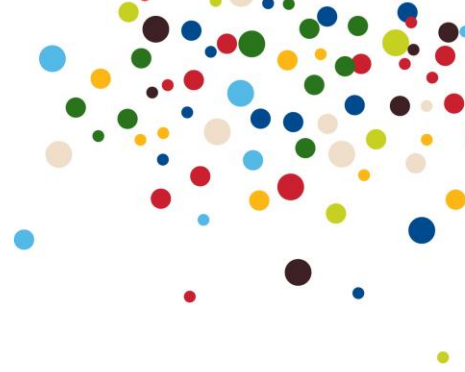
Bandwidth	Price Per Annum	
	Ex VAT	Inc. VAT
128 kbit/s	£5,000	£6,000
256 kbit/s	£6,000	£7,200
512 kbit/s	£7,000	£8,400
2 Mbit/s	£10,000	£12,000

- The annual charge for the 2 Mbit/s option assumes a suitable KC/BT wideband circuit already exists at the customer site, otherwise an additional connection charge of £3,000 exc. VAT (£3,600 Inc. VAT) applies.
- The above prices apply to connections to all customer sites provided they are within 200 kms of O₂ nominated buildings around the UK. (Birmingham, Bristol, Glasgow, London, Manchester, Newcastle, Northampton, Halifax and Slough)
- A one-off charge of £2,000 exc. VAT (£2,400 Inc. VAT) will apply for aborted/missed install appointments where it can be demonstrated that such aborted/missed appointments are the fault of the customer.



Proud to be part
of local life

Mobile Data



b) Link 60

Customers can purchase the Link 60 service which provides a dedicated 2Mbit/s leased circuit able to carry a mixture of voice, data and SMS services. The standard annual charge is £9,000 exc. VAT (**£10,800** inc. VAT) per annum, plus an additional charge of £2,000 exc. VAT (**£2,400** inc. VAT) per annum for GPRS capability. Standard terms and conditions for this service apply, including restrictions on geographical availability.

Note

Customers may source a link independently, but if they do, O₂ will charge them a fee of £2,000 pa exc. VAT (**£2,400** inc. VAT) for GPRS service access management.